

ManageEngine Free Tools User Manual



Free SharePoint Health Monitor Tool

Table of Contents

OVERVIEW	2
FEATURES	4
DOCUMENTS	7
FAQ.....	10

Overview

Free SharePoint Monitoring Tool

The SharePoint server are widely used to manage and share essential documents, business critical information across organization and it is accessed by many users in an organization. So it becomes important that the server should be always reachable to share, update, edit contents. Therefore, it is highly imperative that you monitor and manage the SharePoint server environment continuously.

The ManageEngine "Free SharePoint Health Monitor" tool will address this requirement. The "Free SharePoint Health Monitor" tool monitors the important parameters of SharePoint environments such as SharePoint Site, IIS server, MSSQL server and Host server. The light weight tool fetches the data about the SharePoint environment and presents them as visually elegant graphs and report.

The Free SharePoint Health Monitor is a real-time performance monitor tool and it can monitor the SharePoint server from remote location. The best part is that the tool is made available, absolutely FREE of cost.

Key Benefits

Free SharePoint Health Monitor tool provides a exclusive monitoring of SharePoint 2010 Server and SharePoint 2007 Server. The tool shows the actual number of Current Connection and Maximum Connections of the SharePoint web server. Using the tool, the administrator can view the IIS parameters such as version, IIS state, Service type and Web directories path. Tool monitors SharePoint services, MSSQL parameters such as Free Pages, Page Reads, Page Writes, SQL Cache memory and Buffer Cache Hit Ratio and more.

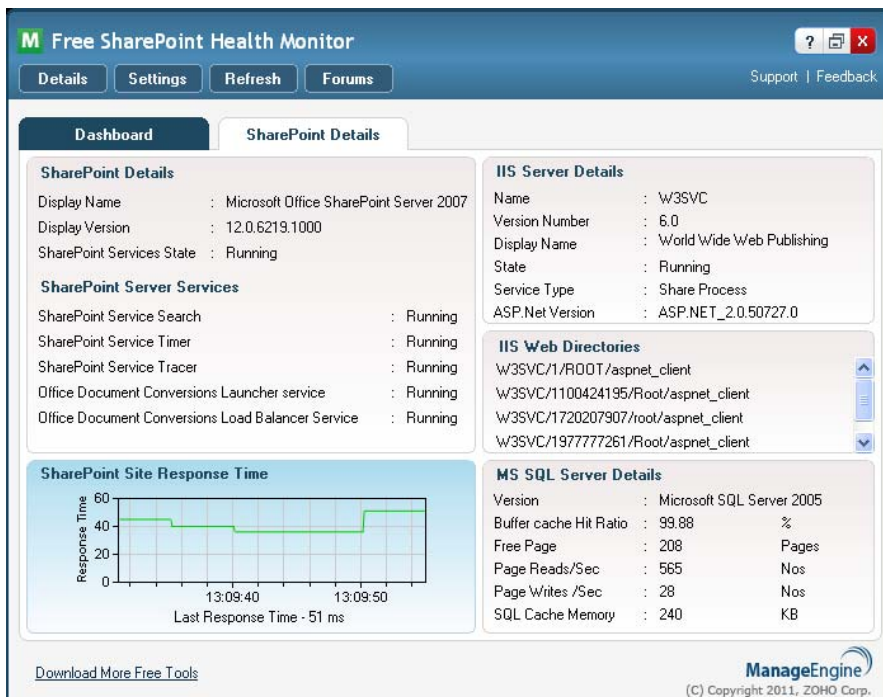
The tool shows the actual resource utilization of the windows servers like CPU utilization, memory utilization and disk utilization as elegant graphs. Using the tool, administrator can set the threshold values for CPU, Disk and Memory utilization, like critical and warning thresholds. Whenever, the server crosses the threshold limits corresponding alerts are shown.

The free tool serves as a smart desktop tool , gives out-of-box monitoring solution for SharePoint environment and helps administrator to monitor SharePoint environment effortlessly.

Dashboard View



SharePoint View



Features

SharePoint Monitoring

ManageEngine's "Free SharePoint Health Monitor" helps the administrator to monitor the SharePoint 2010 Server and SharePoint 2007 Server Environment. The tool monitors the SharePoint environment such as SharePoint site response time, Current and Maximum connections of SharePoint web server, IIS server, MSSQL Servers and Host servers. Some of the features of the tool are,

- Real-time SharePoint Environment performance monitoring tool.
- Ensures IIS server, MSSQL server running state in the SharePoint Environment.
- Alerts are shown in each view when resources are exceeded the threshold limit or servers are down in the network.
- SharePoint Services running state
- SharePoint Site response time is shown as a elegant real-time graph.

The Free SharePoint Monitor tool monitors the following important parameters.

- Host Server Details
- SharePoint Server Details
- SharePoint Service Monitoring
- Internet Information Services (IIS) Details
- MS SQL Server Details

Host Server Details:

CPU Utilization

Monitors CPU usage at regular interval - It helps the administrator to know that if CPU's are running at full capacity or are they are underutilized. Maximum of four CPU can be monitor simultaneously.

Memory Utilization

Checks the Memory utilized at periodic intervals of your Host server. Alerts are shown, when the memory usage crosses the threshold values. The total memory and available memory size can be viewed.

Disk Utilization

Shows disk space availability. Alerts are shown, when the disk usage crosses the threshold values. Up to four partition can be monitored. The total disk space and free disk space can be viewed.

SharePoint Server Details

CurrentConnections

Current number of connections established with the web service are shown.

MaximumConnections

Maximum number of simultaneous connections established with the web service are shown.

SharePoint Site Response Time

The time elapsed between the request sent to the SharePoint Site and the response received from the SharePoint Site are populated.

SharePoint Service Monitoring

Search Service

Shows the SharePoint service used to search the data in the SharePoint database.

Timer Service

The SharePoint Service Timer, which is a service that runs other services according to schedules specified in the timer jobs.

Tracer Service

The SharePoint Service is used by WSS 3.0 to manage trace output of the call stack. If it enabled, the log will be generated in the administrator specified path.

Office Document Conversion Launcher Service

The Office Document Conversion Launcher Service launches the document conversion on an application server.

Office Document Conversion Load Balancer Service

Office Document Conversion Load Balancer Service manages the availability of document converters

Internet Information Services(IIS) Details

RequestsQueued

The number of requests waiting to be processed.

RequestsRejected

The number of requests rejected because the request queue was full.

IIS Web Directories

List the path of the Web directories available in the IIS server.

MSSQL Details

Buffer Cache Hit Ratio

Percentage of pages found in the buffer cache without having to read from disk. It is preferred to be above 90%.

Free pages

Total number of pages on all free lists. Below 640 indicates that the SQL Server is running low on physical memory.

Page reads per second

Number of physical database page reads issued. 80 to 90 per second is normal.

Page writes per second

Number of physical database page writes issued per second. 80 to 90 per second is normal.

SQL Cache Memory

Total amount of dynamic memory the server is using for the dynamic SQL cache.

Documents

SharePoint Health Monitor

Getting Started

Free SharePoint Health Monitor tool provides a exclusive monitoring of SharePoint 2010 Server and SharePoint 2007 Server.

Start the tool, this will take you to the homepage of the SharePoint Health Monitor tool, Click on the settings button on the tool menu and provide the required details to connect to the SharePoint server. This will make the connection with the server. The tool will automatically connect to previously connected server if any.

Server Settings

To monitor a server, Click on the settings button on the tool menu and fill the following information in the settings view,

- Host Name / Host IP
- Domain Name/ Work Group(Optional)
- UserName
- Password
- SharePoint Site Address

Click on Connect button to connect to the server. Click on Cancel button to go to previous page. Once the server is connected, the administrator can view the Dashboard. Administrator can view the following details by selecting the tab,

- Dashboard View
- SharePoint View

Dashboard View

Once the connection to the server is successful, the tool will populate the Dashboard View. In this View, the SharePoint Health Monitor shows the exhaustive reports of the Host server and SharePoint Environment. It shows the host parameters details like CPU, Memory and Disk utilization as elegant charts. It shows SharePoint Environment details like SharePoint version, SharePoint Status, Current and Maximum connection to the server, ASP Request Queue, ASP Request Rejected, IIS state and SQL state.

SharePoint View

In this view, tool View shows the important parameters like SharePoint Site response time, SharePoint services like SharePoint Service Search, Timer, Tracer and Office Document Launch service. MSSQL parameters such as Free Pages, Page Reads, Page Writes, SQL Cache memory and Buffer Cache Hit Ratio and also shows IIS web directory list.

Refresh Server

To know the current status of the server, click on the refresh button available on the tool menu.

Support / Feedback

Need any technical support or want to share any feedback about the tool, you can send your support and feedback by click on the respective link at the top-right links on the tool

Threshold Settings

Using the tool, the administrator can configure the warning threshold and critical threshold for the below parameters. Click on the settings button to configure the threshold values for the following parameters,

- CPU Utilization
- Memory Utilization
- Disk Utilization

The alert will be shown when the utilization crosses the corresponding threshold values.

Refresh Interval

The connected server will be refreshed automatically at regular interval mentioned in the Refresh Rate text box available in settings window. The Interval can be configurable between 5 minutes to 60 minutes.

Site Refresh Rate

The tool sends request to SharePoint site at regular interval mentioned in the Site Refresh Rate text box available in settings window. At Regular interval, the Site response time is updated and viewed in the SharePoint Site Response real-time graph. The Interval can be configurable between 5 secs to 3600 secs(1 hour).

Retaining Values

The tool will automatically saves the server configuration in the host server. During the restart of the tool, it will automatically populates server details.. The server configuration will be saved in file only if the user have write permission. All the input parameters in the settings windows will be saved in the file.

System Requirements

Hardware Requirements

1. CPU : 1 GHz (x86 processor) or 1.4 GHz (x64 processor) and higher versions.
2. Memory : Atleast 512 MB of RAM
3. Disk Space: Atleast 3 MB of disk space must be available before installation and less than 10 MB of disk space is needed after installation.

Software Requirements

Microsoft Windows Operating Systems eg. Windows XP, Windows Vista, Windows 2003 & Windows 7.

* Microsoft .Net Framework 2.0 / 3.0 / 3.5.

Note : If you do not have Microsoft .NET Framework, please download the required version from

1. <http://www.microsoft.com/downloads/details.aspx?FamilyID=0856EACB-4362-4B0D-8EDD-AAB15C5E04F5&displaylang=en> (Microsoft .Net Framework 2.0
2. <http://www.microsoft.com/downloads/details.aspx?FamilyID=10CC340B-F857-4A14-83F5-25634C3BF043&displaylang=en> (Microsoft .Net Framework 3.0)

FAQ

1. Unable to connect to the server?

Please check host server is running properly and check if the host server is behind firewall. If the server is behind firewall and check port 445 and 135 is accessible and if not accessible, then open the port by configuring the firewall.

2. I have downloaded the tool but it is not running. What should I do?

Please check Dot Net platform is installed in your system. Run the utility available in the bin directory, DotNetUtilities.exe , It will tell you the Dot Net version. If Dot Net platform is not available in the system, download the platform. Please see the software requirements page for downloading the platform.

3. What is the use of CPU/Memory Thresholds in the Settings screen?

In Host server, If at all, CPU utilized or Memory used value exceeds the configured threshold values, the tool will then show the alert on the Dashboard to intimate status.

4. SharePoint Health Monitoring Tool shows snapshot value as "NA". What is "NA"?

The values of SharePoint Snapshot are "NA", if the SharePoint Server Environment is not installed in the connected host server. So connect to host where SharePoint Server is installed.

5. Why SharePoint Site Resonse Time is "zero"?

The SharePoint Site Response time value "Zero" represents, the site is down or the specified site is not available during the site request.