

Whats special about MSP Edition?

MSP Edition is built over ManageEngine OpManager, the popular network monitoring software used by DHL, Nortel, Pepsico, The New York Times, Siemens, Time Warner, Wipro, Turner Studios, Wells Fargo and thousands of other small and medium enterprises. OpManager brings with it the following features.

Network Monitoring

Detect, diagnose and resolve network performance issues before they turn into costly downtime.

Server Monitoring

Improve availability and performance of your customer's server Infrastructure and gain in-depth visibility into server problems.

Application Monitoring

Identify and resolve application performance issues before they impact customers.

Integrated Help Desk

Automatically create tickets in the help desk when devices or services fail.

MSP Edition Key Features

Remote Monitoring

Proactively monitor a variety of devices such as servers, firewalls, routers, switches, etc. all from a central location. The MSP Edition comes with comprehensive fault & performance management to enable enhanced visibility of customer deployments.

Secure Communication

To ensure secure and reliable communication between the central server and the probes, the communication is through SSL.

Unlimited Device Monitoring

Proactively monitor unlimited number of your customer devices from a central location.

Customer Specific Reports

Give the customers the info they want; generate reports specific to them

Exchange Monitoring

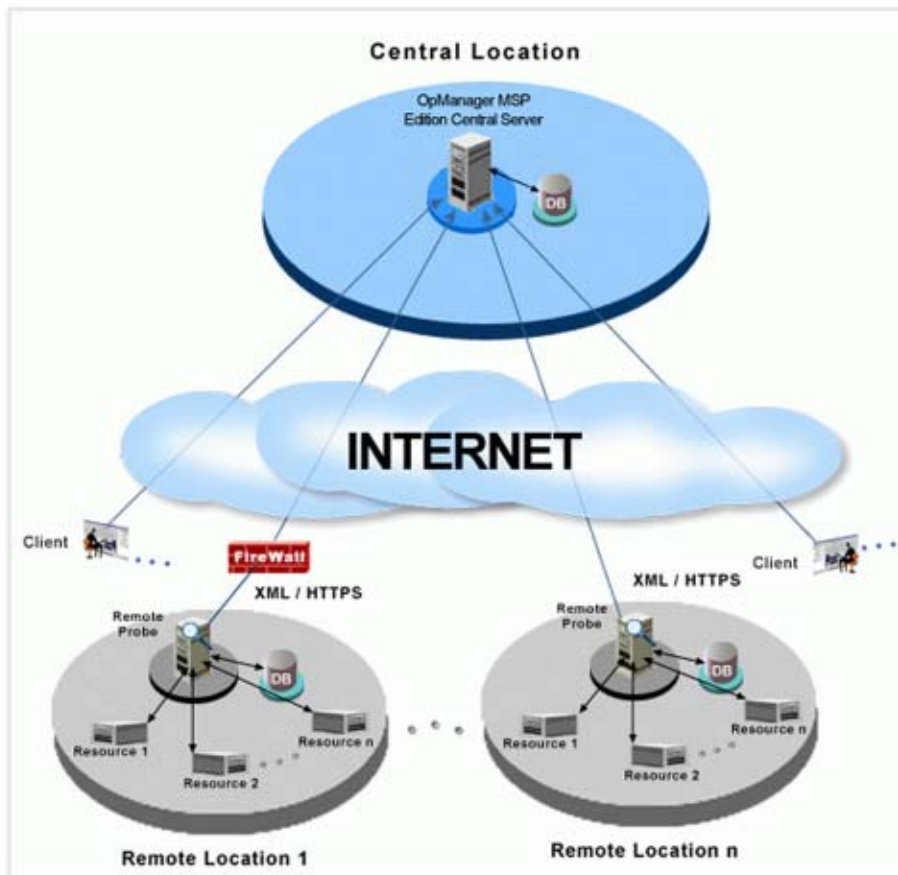
Effectively monitor your Exchange 2000/2003 servers. Identify potential problems and performance degradations before they turn into costly downtime.

What do you gain from MSP Edition?

- Generate recurring service revenues
- Reduce service costs
- Improve customer satisfaction
- Retain your competitive edge
- Keep your customers network performing at an optimal level
- Increase customer retention
- Flexibility & Scalability.
- Easy Administration. No hassles.

How does it work?

You need to install OpManager MSP Edition central server at the network operations center (central location) with remote probes installed at each customer location. The remote probes monitor devices in their locations and communicate back to the central server over a secure HTTPS connection.



Want to try?

Download the
30-day trial
edition now.

www.opmanager.com

System Requirements: 32-Bit x86 Compatible 700Mhz and above, Disk space 200 MB, 512 MB RAM on Windows 2000/2003/XP or Red Hat Linux 7.x and above

OpManager
MSP Edition

Website: www.opmanager.com
Support: <http://support.opmanager.com>
Toll Free: +1 888 720 9500