

ManageEngine OpStor

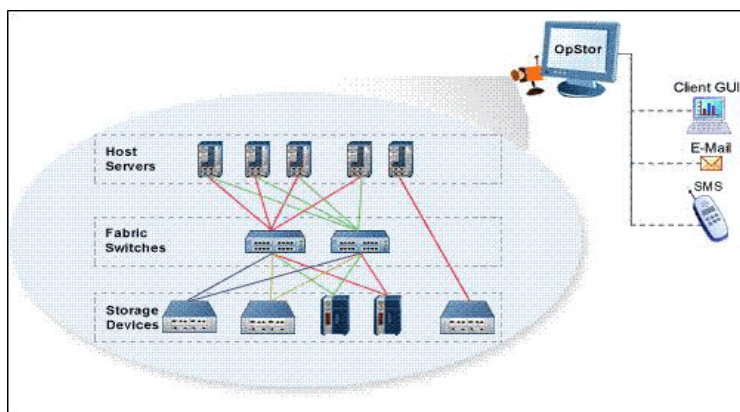
Simplified Storage Infrastructure Monitoring Tool

ManageEngine® OpStor is an enterprise-ready, easy-to-use, and affordable storage infrastructure monitoring solution that helps enterprises to monitor their mission-critical storage resources effectively. It enables you to monitor fiber channel switches, Storage Arrays, Tape Libraries, Host Servers and HBAs which form the backbone of enterprise applications.

ManageEngine® OpStor enables Storage Administrators to have a unified view of their heterogeneous storage environment through a user-friendly web interface. It helps administrators detect problems early before they affect the business applications. It also helps reduce the time to repair through an integrated management solution.

Unified View

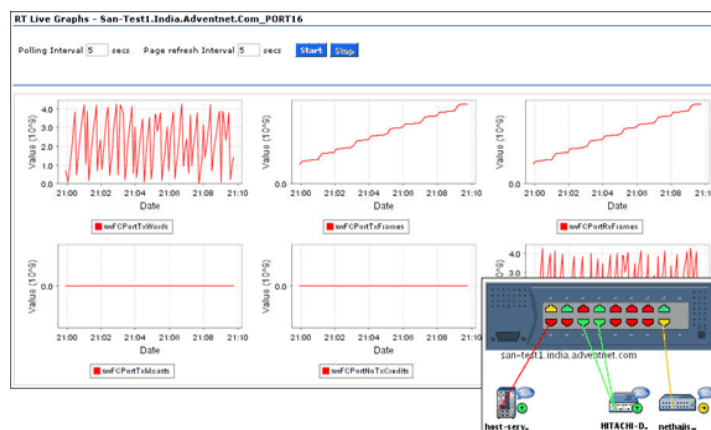
ManageEngine® OpStor gives an integrated view of multi-vendor resources that make up your storage environment. It constantly keeps track of resource availability and performance so that critical business applications that depend on storage infrastructure are not affected. Storage Administrators can view the critical status of storage resources and be notified of any alarms in real time.



Key Benefits

- ▶ Increased visibility with unified view of your storage environment
- ▶ Reduced downtime with timely detection of problems
- ▶ Saved administrative time with effective reporting and escalations
- ▶ Lower Total Cost of Ownership with NO extra software purchases
- ▶ Simplified management at an affordable price

Fabric Switch Monitoring



- ▶ Ensure Port availability
- ▶ Monitor Port performance and utilization
- ▶ Monitor zones, VSANs
- ▶ Troubleshoot with real-time graphing
- ▶ Secure telnet tunnelling

Storage Array Monitoring

NetApp RAID - netapp_1

Volume Name	Used Storage	Total Storage	Used Percentage
/vol/mirror1/	232.5GB	615.4GB	37 %
/vol/mirror1/.snapshot	10.9GB	68.5GB	15 %
/vol/mirror2/	357.2GB	605.0GB	59 %
/vol/mirror2/.snapshot	21.5GB	65.2GB	32 %
/vol/mirror3/	340.3GB	615.4GB	55 %
/vol/mirror3/.snapshot	17.9GB	68.5GB	26 %
/vol/mirror4/	275.9GB	615.4GB	44 %
/vol/mirror4/.snapshot	22.4GB	68.5GB	32 %
/vol/mirror5/	232.5GB	615.4GB	37 %
/vol/mirror5/.snapshot	10.9GB	68.5GB	15 %
/vol/vol0/	135.1MB	95.6GB	0 %
/vol/vol0/.snapshot	13.2MB	23.9GB	0 %
/vol/vol1/	357.2GB	605.0GB	59 %
/vol/vol1/.snapshot	21.5GB	65.2GB	32 %
/vol/vol2/	340.3GB	615.4GB	55 %
/vol/vol2/.snapshot	17.9GB	68.5GB	26 %

- ▶ Monitor Physical components - Controllers, ports, drives
- ▶ Monitor logical components - LUNs, Volumes, Storage Groups
- ▶ Monitor health, availability and utilization of resources
- ▶ Monitor sensor faults, battery, Power supply status

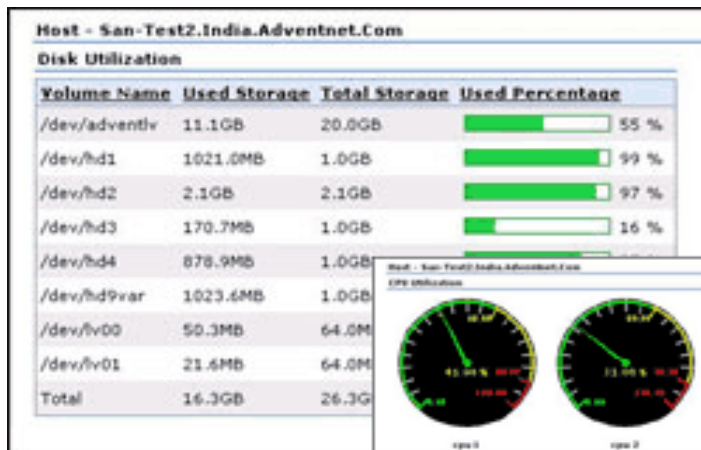
Tape Library Monitoring

- ▶ Monitor Physical components - Tape drives, ports, cartridges
- ▶ Monitor logical components - Partitions, Movers
- ▶ Monitor health, availability and utilization of resources
- ▶ Monitor sensor faults, battery, Power supply status
- ▶ Launch device manager application from OpStor client

HBA Monitoring

- ▶ Ensure HBA Port availability
- ▶ Monitor HBA Port performance and utilization
- ▶ Monitor traffic on HBAs

Host Server Monitoring



- ▶ Identify SCSI / HBAs mounted on Host servers
- ▶ Monitor CPU & Memory utilization
- ▶ Monitor Disk space Utilization & IO statistics
- ▶ Monitor Windows, Linux, Solaris, HP-UX, IBM AIX servers

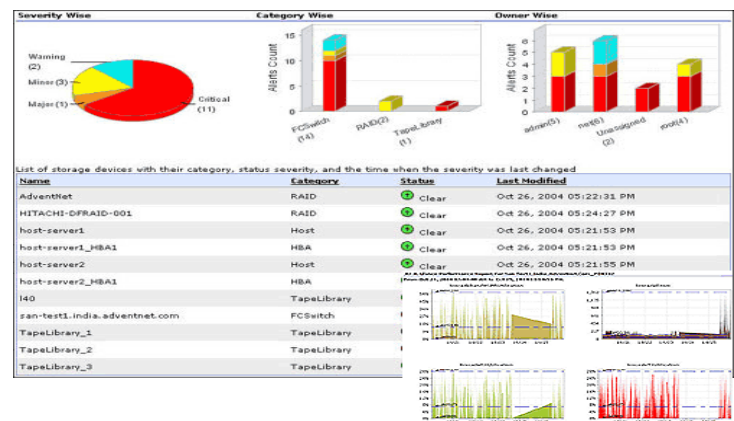
Notify & Resolve Problems

- ▶ Intelligent alarm correlation and color coded alarms
- ▶ Automatic escalation of critical and unresolved alarms
- ▶ Get notified through e-mail, SMS
- ▶ Take corrective actions by executing custom scripts
- ▶ Acknowledge and add operator notes

System Requirements

Hardware	: Pentium III 1Ghz, 1GB RAM, 10 GB disk space
Operating System	: Windows, Linux
Web Browser	: Internet Explorer, Mozilla and Firefox

Reports and Graphs



- ▶ Reports on storage resource availability & utilization
- ▶ Reports on Key performance indicators (KPI)
- ▶ Top-N reports on Availability & Performance
- ▶ Reports on vendor & location spread
- ▶ Reports on critical alarms and history
- ▶ Real-time graphs at port level to troubleshoot problems

Miscellaneous

- ▶ Search – To find a device or alarm by specifying a sub-string of the same.
- ▶ Help – To guide the user in case he does not understand how to proceed with a particular operation
- ▶ Talkback – To file issues, suggestions, or feature requests in OpStor.
- ▶ Export as PDF – To save the reports and other information shown in the client, for future reference
- ▶ Printer Friendly – To print the reports and other information shown in the client.
- ▶ Sorting – To enable easy grouping of records, all the tables are sortable on their column headings



ZOHOCorp.

4900 Hopyard Rd., Suite 310
Pleasanton, CA 94588. USA
Phone: 1-925-924-9500
Fax: 1-925-924-9600

<http://www.zohocorp.com>

For queries on products : sales@manageengine.com

For support: opstor-support@manageengine.com

About ZOHOCorp.

ManageEngine is the Enterprise IT Management Software division of ZOHOCorp. (formerly AdventNet, Inc.). Founded in 1996, ZOHOCorp. is headquartered in Pleasanton, CA with offices in North America, Europe and Asia. ZOHOCorp. is privately held.

ZOHOCorp. has served a diverse range of enterprise IT, networking and telecom customers. ZOHOCorp. has achieved impressive growth over the years and has been a rock-solid supplier and partner, with sound financials. Visit us at <http://www.zohocorp.com>.