

AdventNet QEngine Web Functional Test Tool

AdventNet QEngine Web Functional is a powerful, affordable and complete web-based testing tool that provides one-click access to test the client-side functionality of your web applications /e-Commerce from local or remote machines. It provides an easy-to-learn web interface to completely automate the creation of sophisticated test scripts, allowing you to record and playback web browser events in IE, Firefox and Mozilla browsers in both Windows and Linux machines. This helps you to ensure that your mission-critical web application's functionality works under valid and invalid conditions.

Highlights

- Record/Playback Capability
- Powerful Test Scripts
- Data-Driven Test Scripts
- Powerful Script Editor
- Development to Production, Use same script
- Multi-Browser Support
- Multi-Platform Support
- Easy to claim multiple environment support
- GUI, DB, and File Checkpoints
- User access privileges support for test data
- Analog Mode Recording Support
- Learn Mode Recording Support
- Built-in Exception Handling for Error Recovery
- Schedule Tests for Unattended Execution
- Clear and Powerful Reporting
- Built-in Bug Tracker
- Easily Customize for your using Bug Tracker
- Internationalization Support
- Application Map Object Editor
- Global Variables Editor
- Multiple Play Option Support
- Access your test data from anywhere
- Best Price-Feature Ratio

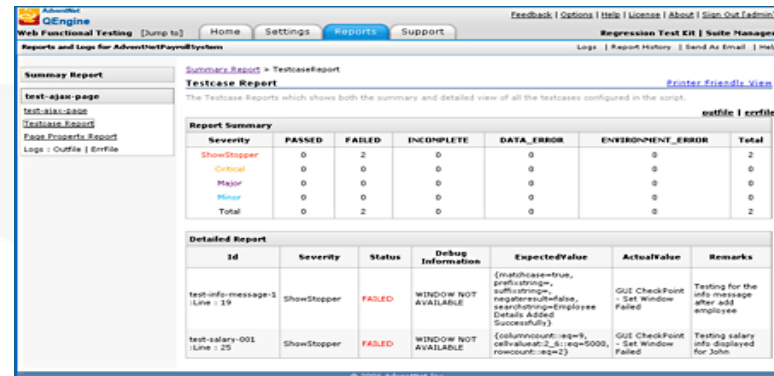
Key Features

Record and Playback Capability

Records and replays each and every action performed on the Web application, includes frames, iframes, modal & modeless dialogs, pop-up windows including alerts, prompts and file open & save dialog, multiple window openings, checkings/uncheckings, etc. Supports any Web applications developed using HTML, DHTML, JavaScript, ASP, .Net, JSP, SERVLET, PHP, CGI, AJAX, etc.,

Powerful Test Scripts

Web browser events are recorded as function calls in simple English which will be more readable, For e.g., clickButton, clickLink, etc., Actually it is based on Jython scripting language which provides the fastest and easiest way to create, read, and manipulate test scripts, even without programming skills. Jython provides more customizing control over testing and in addition have the ability to invoke regular Java classes from your test scripts. It also provides support for complex looping constructs such as, For, if...else, etc.. Jython is a more powerful & easy scripting language, In QEngine you can realize the reason for most of the powerful tools using Jython astest scripts.



Severity	PASSED	FAILED	INCOMPLETE	DATA_ERROR	ENVIRONMENT_ERROR	Total
ShowStopper	0	2	0	0	0	2
Critical	0	0	0	0	0	0
Major	0	0	0	0	0	0
Minor	0	0	0	0	0	0
Total	0	2	0	0	0	2

Id	Severity	Status	Debug Information	ExpectedValue	ActualValue	Remarks
test-inf-message-3 (Line : 19)	ShowStopper	FAILED	WINDOW NOT AVAILABLE	{matchCase=true, prefixStr="...", suffixStr="...", negateResult=false, searchStr="Employee Details Added Successfully"}	GUI CheckPoint after add employee Failed	Testing for the info message after add employee
test-salary-001 (Line : 25)	ShowStopper	FAILED	WINDOW NOT AVAILABLE	{columnCount: eq=9, cellCount: eq=5000, rowCount: eq=2}	GUI CheckPoint Set Window Failed	Testing salary info displayed for John

Data-Driven Test Scripts

The Data Configuration Screen creates data-driven test scripts to add variables or parameterize lines in your test scripts. Test scripts can be created with varying input where the values are substituted at runtime from an external database, CSV file or from user-defined variables, or reserved variables

Powerful Script Editor

Scripts can be edited to include conditional statements and loops to make them even more powerful in seconds. The script editor will be helpful to make your script more customized according to your application needs. It will displays the text in different colours for more readability and to identify the similar functions easily. You can add your own comments easily anywhere in the script for your future references which will reduce your complexity in the test data development and maintenance. During playback, the script editor will highlight the currently executed line which will make your execution more lively.

Development to Production, Use same scripts

QEngine allows you to dynamically change the application running location like host name and port number without re-recording, without changing the test scripts, so as to playback the test scripts with any host name and port number by just setting the values of host and port before executing the scripts in the Host-Port Settings screen. So If you recorded the script in the development stage, you can reuse the script after you deployed for the production.

Multi-Browser Support

Interoperability between IE/Firefox/Mozilla browsers. Scripts recorded in Microsoft Internet Explorer can be played in Mozilla, Firefox and viceversa. You can claim multi browser support for your application within minutes with no extra effort and cost.

Multi-Platform Support

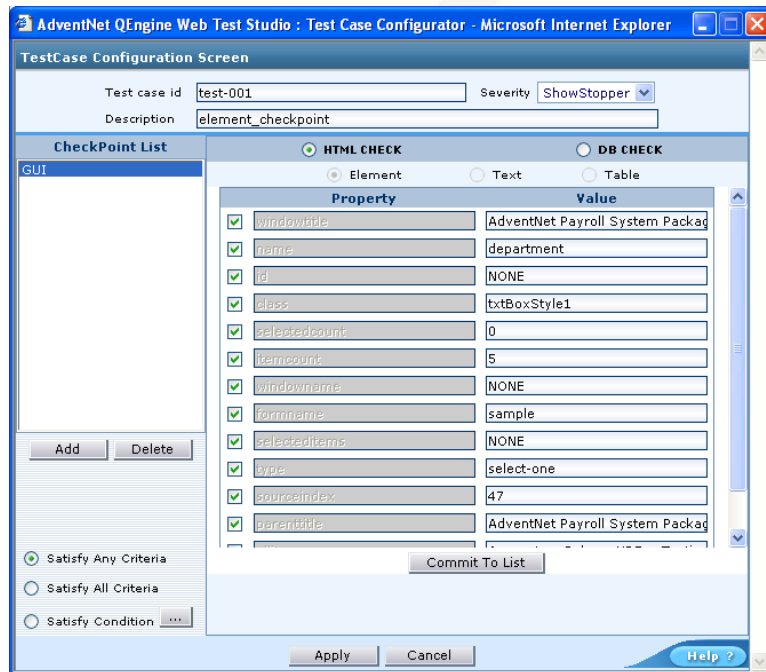
Record once in a platform and playback against different platforms. Record and replay of test scripts in Windows and Linux machines are supported.

Easy to claim multiple environment support

Record once in anyone of the supported browser say IE in Windows, and playback against different environments say 5 to more than 15 environments. Using QEngine you can claim multiple environments (say 5 to more than 15 combinations) with no extra effort and cost.

GUI, Database, and File Checkpoints

Supports Element, Table, Image, and Web Text property validation. It allows validation of Database, Table data, File data as well as single property check point support for GUI elements. More than 100 functions are provided to test your application pages.



User access privileges support for test data

QEngine allows users to have their own login. It allows to create users with admin or non-admin privileges. You can Restrict or Provide access to other users to view or edit your test data. Users with admin privileges can have access to all test data by default. Default user "admin" will have super admin privilege to create workspace. Workspace is nothing but group of suites which are related to your individual project or application or team. You can also use QEngine without these privileges setup..

Analog Mode Recording Support

QEngine supports analog mode recording. You can use this option to record the actions over the customized elements or objects which by default not recognizable by QEngine during recording. You can easily switch between default & analog mode recording by choosing the corresponding mode in the QEngine toolbar record mode list.

Learn Mode Recording Support

QEngine also supports learn mode recording. Using this you can update your test scripts for your updated application pages without re-recording. If your application is changed in the new version, you can use this option to record the newly added elements or objects or pages from your application. Then learned objects can be associated to the corresponding functions and added to the scripts.

Built-in Exception Handling for Error Recovery

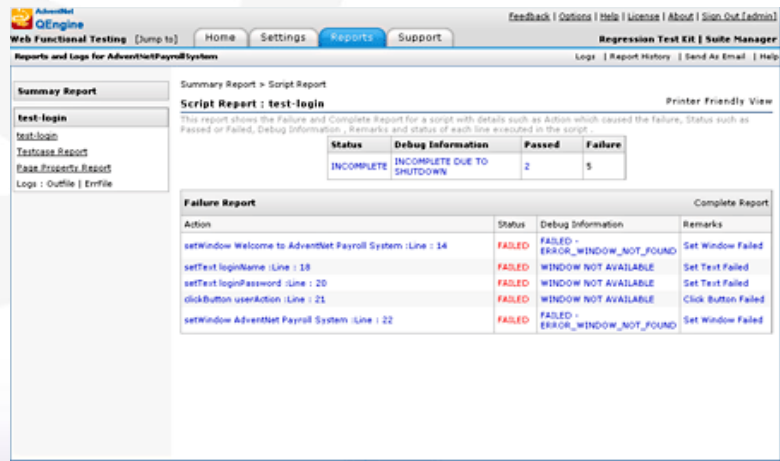
When an unexpected error occurs during a test run, QEngine automatically moves to the next test run enabling unattended testing. You can also choose any one of the provided options or you can customize to do as per your wish if any error occurs.

Schedule Tests for Unattended Execution

Test suites can be scheduled to run at specific time intervals: hourly, weekly, monthly, daily or even only once for unattended test execution. You can schedule the tests in the local or remote machine by just installing the QEngine toolbar in few seconds.

Clear and Powerful Reporting

HTML-based reports to indicate the status of the test execution. Hyperlinks allow easy navigation through the report. Summary of the reports are also generated for test scripts and test cases which links to the passed and failed test cases. This helps in effective review of the failed cases..



Built-in Bug Tracker

Built-in Bug tracker (QEngine Issue Manager) helps you to track product defects and manage product enhancement requests. It enable the users to log in defects / requests from any geographic location and allows all the team members to access the tracking system from anywhere, anytime.

Easily Customize for your using Bug Tracker

QEngine allows you to integrate any third-party Bug Tracking Systems to help you to track bugs the way you are used to..

Internationalization Support

Provision to playback the recorded script in any locale by setting the required language and country using the Play Settings option.

Application Map Object Editor

Application Map Object Editor provides a tree-view of all window and element objects that represents the actual objects in your web application in the left-pane. The right-pane which displays all the properties of the window and element objects, can be edited.

Global Variables Editor

Allows you to set and get global variables across test scripts using setGlobal() and getGlobal()

Multiple Play Option SupportGlobal Variables Editor

Allows you to set and get global variables across test scripts using setGlobal() and getGlobal()

Multiple Play Option Support

Recorded scripts can be played in Fast Mode or with same time delay as recorded. There is also a provision to Play from Web UI or with command line utility. Scripts can also be executed in unattended mode using the Test Scheduler option.

Access your Test Data from anywhere

QEngine allows users to view or edit the test data from any machines. No installation is required for the remote machines to view or edit the test data. QEngine web UI allows users to use the test data from any machines using browsers. If you need to record or playback the test scripts from the remote machines then its enough to install the QEngine toolbar in the browser and can start using the QEngine as same as in the local machine in seconds. No extra cost to use the QEngine from the remote machine.

System Requirements

Software	<ul style="list-style-type: none">• Windows NT 4.0• Windows 2000 / 2003• Windows XP• Linux 7.2 & above
Hardware	<ul style="list-style-type: none">• Pentium III 500 MHz• 258 MB RAM or higher• 120 MB for installation• 200 MB for space after installation
Supported Browsers	<ul style="list-style-type: none">• Internet Explorerr : 6.0 & 7.0• Mozilla : 1.7.6 - 1.7.12• Firefox 1.5.0 & 2.0

Best Price-Feature Ratio

Competitively priced, AdventNet QEngine provides support for test and verification of web applications on multiple platforms/ browsers. Furthermore, AdventNet offers excellent customer support.



AdventNet Inc

5645 Gibraltar Drive, Pleasanton, CA 94588. USA

Phone: 1-925-924-9500

Fax: 1-925-924-96 00

Web Site: <http://www.adventnet.com>

For queries on products : sales@adventnet.com

For 24/7 support: qengine-support@adventnet.com

© Copyright 2007 AdventNet Inc. All Rights Reserve

About AdventNet

Enabling Management Your Way™

AdventNet provides affordable software for management and provisioning of complex networks, systems and IT applications. With a broad product portfolio and an active customer base ranging from enterprises, equipment vendors and service providers, AdventNet has emerged as a very affordable and high-quality alternative to expensive software that is common in this industry.

AdventNet is headquartered in Pleasanton, CA with offices in NJ, MA, Canada, India, UK, China, and Japan and has a well-trained partner base around the globe. It has over 450 employees and more than 1000 customers.