

ManageEngine QEngine Web Functional Test Tool

ManageEngine QEngine Web Functional is a powerful, affordable and complete web-based testing tool that provides one-click access to test the client-side functionality of your web applications /e-Commerce from local or remote machines. It provides an easy-to-learn web interface to completely automate the creation of sophisticated test scripts, letting you record and playback web browser events in IE, Firefox and Mozilla browsers in both Windows and Linux machines. This helps you to ensure that your mission-critical web application's functionality works under valid and invalid conditions.

Highlights

- Record/Playback Capability
- Jython Test Scripts
- Data Driven Test Scripts
- Powerful Script Editor
- GUI, DB, and File Checkpoints
- Dynamic Host-Port Changes in Test Scripts
- Multi-Browser Support
- Multi-Platform Support
- Multiple Play Option Support
- Built-in Exception Handling for Error Recovery
- Global Variables Editor
- Built-in Bug Tracker
- Schedules Tests for Unattended Execution
- Clear and Powerful Reporting
- Application Map Object Editor
- Interoperability With Bug Tracking System
- Internationalization Support
- IBest Price-Feature Ratio

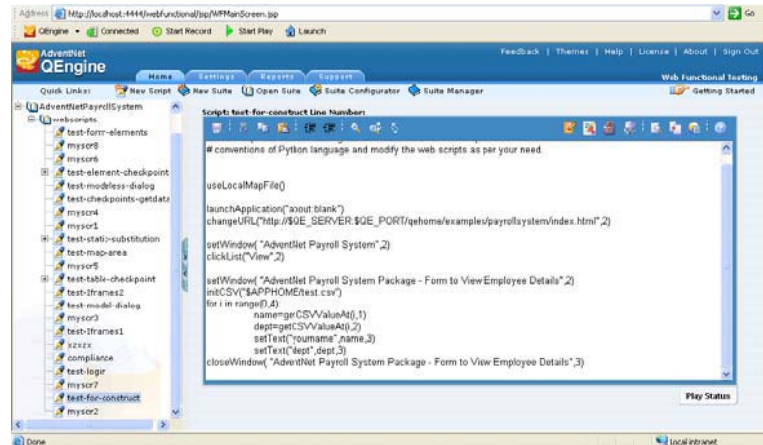
Key Features

Record and Playback Capability

Records and replays every action performed on the Web application, such as selections, string input, frames, pop-up windows including alerts and prompts, multiple window mode, checkings/uncheckings, etc. Supports any Web applications developed using HTML, DHTML, ASP, Java, JavaScript, etc.

Jython Test Scripts

Web browser events are recorded as Jython scripts which provides the fastest and easiest way to create, read, and manipulate test scripts, with no programming. Jython scripts provide more control over testing and have the ability to invoke regular Java classes. It also provides support for complex looping constructs such as, For, if...else, etc..



Data-Driven Test Scripts

The Data Configuration Screen creates data-driven test scripts to add variables or parameterize lines in your test scripts. Test scripts can be created with varying input where the values are substituted at runtime from an external database, CSV file or from user-defined variables, or reserved variables.

Powerful Script Editor

The script editor displays line numbers and highlights the currently executing line number during playback. Scripts can be edited to include conditional statements and loops to make them even more powerful.

Dynamic Host-Port Changes in Test Scripts

QEngine allows you to dynamically change the host name and port number in the test scripts without re-recording so as to playback the test scripts with any host name and port number by just setting the values in the Host-Port Settings screen.

Multi-Browser Support

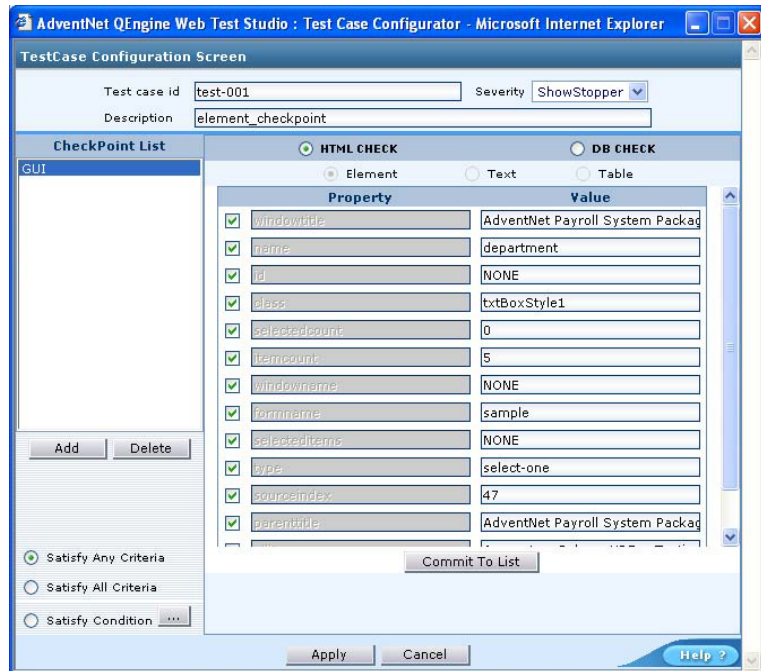
Interoperability between IE/Firefox/Mozilla browsers. Scripts recorded in Microsoft Internet Explorer can be played in Mozilla, Firefox and viceversa.

Multi-Platform Support

Record and replay of test scripts in Windows and Linux machines.

GUI, Database, and File Checkpoints

Supports Element, Table, Image, and Web Text property validation. It also allows validation of Database table data and File data as well as single property check point support for GUI elements.



Multiple Play Option Support

Recorded scripts can be played in Fast Mode or with same time delay as recorded. There is also a provision to Play from Web UI or with command line utility. Scripts can also be executed in unattended mode using the Test Scheduler option.

Built-in Exception Handling for Error Recovery

When an unexpected error occurs during a test run, it automatically moves to the next test run enabling unattended testing.

Global Variables Editor

Allows you to set and get global variables across test scripts using setGlobal() and getGlobal().

Built-in Issue Tracker

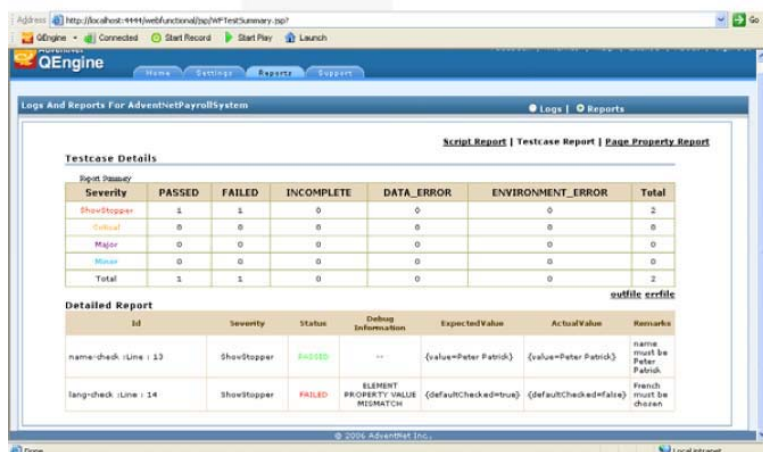
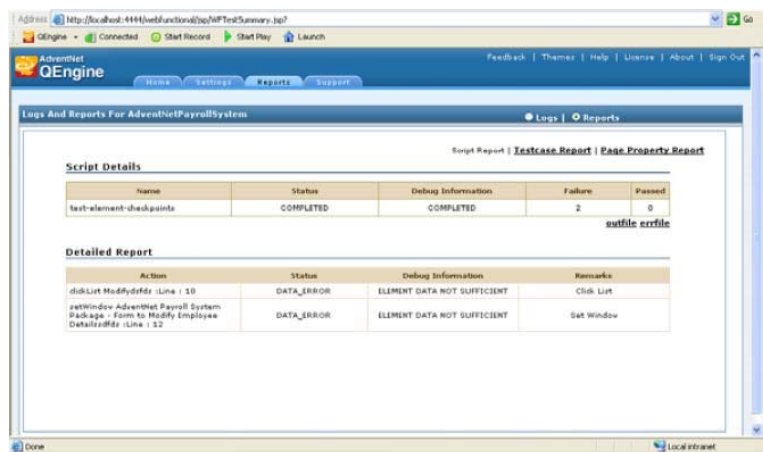
Built-in issue tracker (QEngine Issue Manager) helps you to track product defects and manage product enhancement requests. It enables users to log in defects / requests from any geographic location and allows all the team members to access the tracking system from anywhere, anytime.

Schedule Tests for Unattended Execution

Test suites can be scheduled to run at specific time intervals: hourly, weekly, monthly, daily or once only for unattended test execution.

Clear and Powerful Reporting

HTML-based reports to indicate the status of the test execution. Hyperlinks allow easy navigation through the report. Summary reports are also generated for test scripts and test cases which links to the passed and failed test cases. This helps to effectively review failures.



ApplicationMapObjectEditor

Application Map Object Editor provides a tree-view of all window and element objects that represent the actual objects in your web application in the left-pane. The right-pane which displays all the properties of the window and element objects, can be edited.

Interoperability with Bug Tracking System

QEngine allows you to integrate any third-party Bug Tracking Systems to help you track bugs the way you are used to.

Internationalization Support

Provision to playback the recorded script in any locale by setting the required language and country in the Play Settings option.

Best Price-Feature Ratio

Competitively priced, ManageEngine QEngine provides support for test and verification of web applications on multiple platforms/ browsers. Furthermore, AdventNet QEngine offers excellent customer support.

System Requirements

Software	Windows NT 4.0 Windows 2000 Windows XP Linux 7.2 & above
Hardware	Pentium III 500 MHz 258 MB RAM or higher 120 MB for installation 200 MB for space after installation
Supported Browsers	Internet Explorer : 6.0 Mozilla : 1.7.6 & Higher Firefox 1.5.0



ZOHO Corp.

4900, Hopyard Rd., Suite 310, Pleasanton, CA 94588 USA

Phone: +1-925-924-9500

Fax: +1-925-924-9600

Website: <http://www.zohocorp.com>

For queries on product: sales@manageengine.com

For 24/7 support: qengine-support@manageengine.com

About ManageEngine

ManageEngine is the leader in low-cost enterprise IT management software. The ManageEngine suite offers enterprise IT management solutions including Network Management, HelpDesk & ITIL, Bandwidth Monitoring, Application Management, Desktop Management, Security Management, Password Management, Active Directory reporting, and a Managed Services platform. ManageEngine products are easy to install, setup and use and offer extensive support, consultation, and training. More than 30,000 organizations from different verticals, industries, and sizes use ManageEngine to take care of their IT management needs cost effectively. ManageEngine is a division of ZOH0 Corporation. For more information, please visit www.manageengine.com.