

ManageEngine QEngine Web Performance Test Tool

ManageEngine QEngine Web Performance is a powerful, easy-to-use and affordable load and performance testing tool to quickly test the performance of your web applications. It realistically simulates load for a large number of users to gather the performance and stability information of your web application. All these products are part of a single tool saving maintenance and training costs.

Highlights

- HTTP/HTTPS Protocol Support
- Realistic User Scenarios
- Real-world User Emulation
- Parameterization
- URL Rewriting for Session Tracking
- Server Monitoring
- Database Monitoring
- Modem Simulation
- Response Validation
- Configurable Play Settings
- Distributed Load Testing
- Multi-Platform Support
- Anytime-Anywhere Access
- Summary and Detailed Reports/Graphs
- Authentication Support
- Test Scheduling for Unattended Execution
- Interoperability with Bug Tracking System
- Best Price-Feature Ratio

Key Features

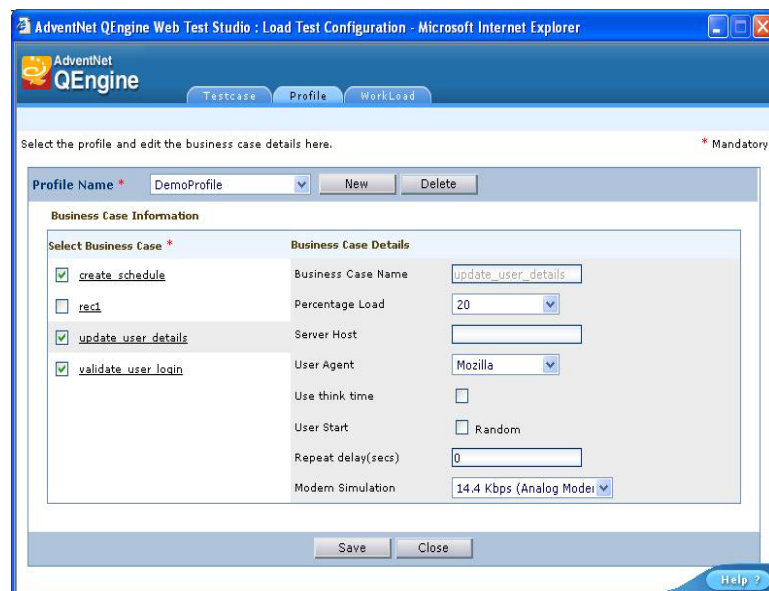
HTTP/HTTPS Protocol Support

Provides a Web-based user interface to automatically record URLs in any Web browser. Monitors any HTTP/HTTPS traffic in current user session

Realistic User Scenarios

Intuitive and easy-to-use Load Test Configurator UI allows you to configure multiple user scenarios to emulate the real-user activities. This UI provides extensive configuration options to emulate multiple types of browsers, user behavior such as think times, repeat delay (user iterations), percentage of load for each user, the speed with which the recorded business cases will be replayed (normal with think time or fast mode), etc. You can also group the individual user scenarios as user profiles and associate the workload for each user profile as load test cases.

You can also redirect all of the URLs contained in the business case to a different host. This enables you to run the recorded business cases against different hosts without re-recording them.

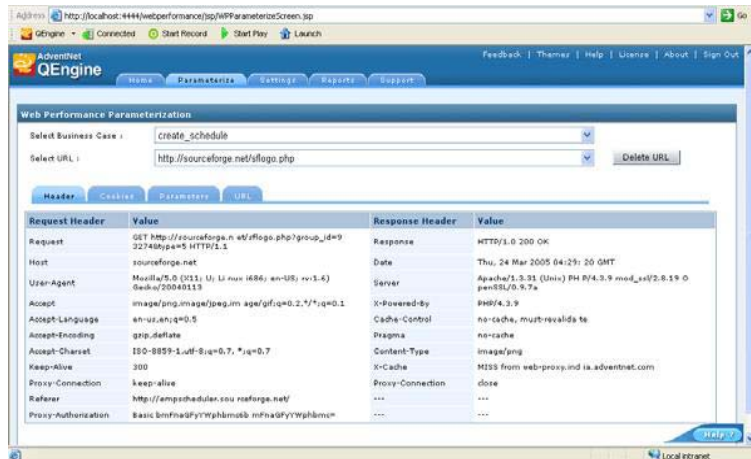


Parameterization

Parameterization allows you to send realistic requests to a web-server. Parameterization UI displays a wide range of information, such as Request Header, Response Header, Cookies, Parameters, and the URLs in a web page. Dynamic parameter values can be passed on to the recorded web pages by fetching it from an external data source such as FLAT file or database, from a previous response body or from a previous URL such as session IDs, from html elements, from client cookies or by executing Javascripts to fetch cookie value or parameter value. This enables you to capture real-world user testing and effortlessly generate complex data-driven load test scripts in minutes.

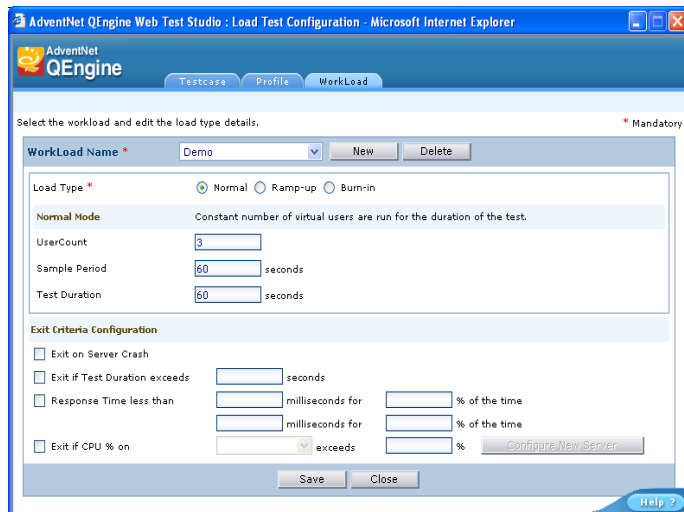
URL Rewriting for Session Tracking

QEngine provides the URL-Rewriting option to simulate real-time session tracking. You can parameterize the appropriate session IDs in the recorded URLs by fetching the values from an external data source such as FLAT file or database, from a previous response body, from a previous url, from html elements, from client cookies or by executing Javascripts to fetch a cookie value or a parameter value.



Real-world User Emulation

Accurately simulates a large number of virtual users performing a defined set of transactions (or business cases) in your web application. This supports various workload types such as steady state workload (Normal), increasing workload (Ramp-up) and repeated load testing for a large number of virtual users based on exit criteria (Burn-in). It also provides a Unique IP for each Virtual user option to emulate the behavior of different IP addresses accessing the web application. You can associate each workload configuration with specific or multiple-user scenarios as load test cases to capture the real-life user testing.



Server Monitoring Support

Server Monitoring capability allows you to monitor the resource utilization such as CPU and memory usage of Web servers running in Windows/Linux machines. Monitored results are used to generate the reports and graphs.

Database Monitoring Support

Database Monitoring feature allows you to monitor the database parameters for data-bases such as MySQL, Oracle, etc. Parameters monitored for MySQL include Thread Details, Connection Details, Throughput, Table Related Statistics, etc.

Modem Simulation

Modem Simulation emulates the different connection speeds with which the user connects to the web server during playback. Each virtual user can be connected to the server with different bandwidths using a variety of modems, such as, Analog modem (14.4 kbps, 28.8 kbps, and 56 kbps), ISDN modem (64 kbps), Dual ISDN modem (128 kbps), and DSL modem (512 kbps).

Response Validation

It is possible to insert built-in functions in the load test scripts to validate the response during playback and detect application-level failure.

Configurable Play Settings

Provides considerable flexibility, enabling testers to configure the play settings before running the load test. You can configure values such as Socket Timeout, Protocol version, enable/disable Unique IP for each Virtual User, Think Time Multiplication Factor, Proxy Settings, Connection type to the server, Retry and Redirect details, Authentication Provider details, Include Image Download Time, Save Response, Save Logs for each User, etc.

Distributed Load Testing

To predict the performance of a web application with distributed architecture, QEngine provides a single load test controller that centrally manages, automatically generates and distributes the load across multiple play engines. Web-based Play Engine Configuration UI allows you to quickly and easily configure the distributed machine IPs and the maximum virtual users to be simulated in each machine (Windows or Linux machines).

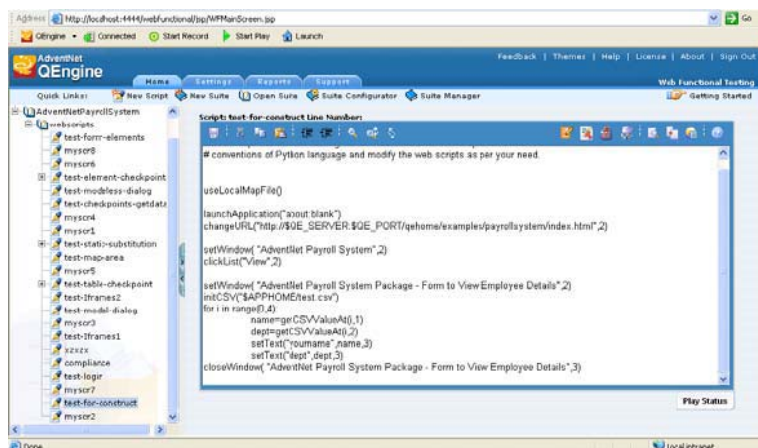
Anytime-Anywhere Access

QEngine toolbar enables you to connect to central QEngine test server and log in from any remote machine to access all aspects of your load testing suites. Multiple team members can create test suites Summary and Detailed Reports/Graphs

Provides a clear and comprehensive range of reports and graphs to quickly and easily identify the potential bottlenecks in your web application. It displays both summary and detailed reports and graphs that are categorized as load generated against server, data transfer rate, how fast the server responds, how fast the pages are loaded, error reports, saved responses, saved logs, response validation reports,

Summary and Detailed Reports/Graphs

Provides a clear and comprehensive range of reports and graphs to quickly and easily identify the potential bottlenecks in your web application. It displays both summary and detailed reports and graphs that are categorized as load generated against server, data transfer rate, how fast the server responds, how fast the pages are loaded, error reports, saved responses, saved logs, response validation reports, server monitoring graphs and database monitoring graphs.



Authentication Support

Support for authentication methods such as Basic, NTLM, etc.

Built-in Issue Tracker

Built-in issue tracker (QEngine Issue Manager) helps you to track product defects and manage product enhancement requests. It enables users to log in defects / requests from any geographic location and allows all the team members to access the tracking system from anywhere, anytime.

Test Scheduling for Unattended Execution

Test suites can be scheduled to run at specific times: hourly, weekly, monthly, daily or only once for unattended test execution.

Interoperability with Bug Tracking System

QEngine allows you to integrate any third-party Bug Tracking Systems to help you track bugs the way you are used to.

Best Price-Feature Ratio

Competitively priced, ManageEngine QEngine provides support for test and verification of web applications on multiple platform / browsers. Further, QEngine offers excellent customer support.

System Requirements

Software	Windows NT 4.0 Windows 2000 Windows XP Linux 7.2 & above
Hardware	Pentium III 500 MHz 256 MB RAM or higher 120 MB for installation 250 MB for space after installation.
Supported Browsers	Internet Explorer 6.0 & 7.0 Mozilla 1.7.6 & Higher Firefox 1.5



ZOHO Corp.

4900, Hopyard Rd., Suite 310, Pleasanton, CA 94588 USA

Phone: +1-925-924-9500

Fax: +1-925-924-9600

Website: <http://www.zohocorp.com>

For queries on product: sales@manageengine.com

For 24/7 support: qengine-support@manageengine.com

About ManageEngine

ManageEngine is the leader in low-cost enterprise IT management software. The ManageEngine suite offers enterprise IT management solutions including Network Management, HelpDesk & ITIL, Bandwidth Monitoring, Application Management, Desktop Management, Security Management, Password Management, Active Directory reporting, and a Managed Services platform. ManageEngine products are easy to install, setup and use and offer extensive support, consultation, and training. More than 30,000 organizations from different verticals, industries, and sizes use ManageEngine to take care of their IT management needs cost effectively. ManageEngine is a division of ZOH0 Corporation. For more information, please visit www.manageengine.com.