

AdventNet QEngine Web Services Test



AdventNet QEngine Web Services Test Tool

AdventNet QEngine Web Services Test Tool is a flexible, easy-to-use and affordable way to test the functionality and performance of your web services that are bound with the SOAP/HTTP binding. This includes

- AdventNet QEngine Web Services Functional Test Tool - To automate the functional testing of your web services for valid, invalid and inopportune inputs. It automatically generates scripts from a WSDL document and validates XML responses to web service requests
- AdventNet QEngine Web Service Performance Test Tool - To automate the performance testing of web services from local or remote machines. It realistically simulates load to identify the performance bottlenecks and failures within your web services. You can automatically generate the load test scripts from a WSDL document and configure the load test data through the web-based interface. Load tests can be run simulating a single virtual user or a large number of simultaneous virtual users.

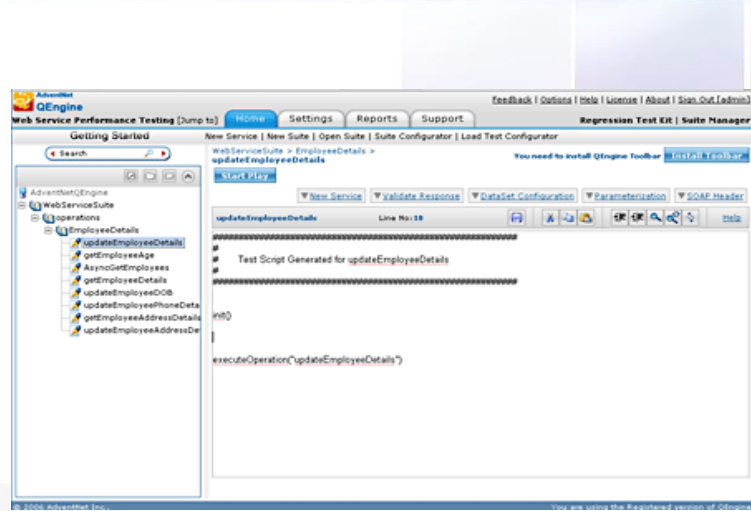
Highlights

- Automatic WSDL Parsing
- No Learning Curve in Script
- Data-Driven Test Scripts
- Array/Complex/ComplexArray Type Argument Support
- Predefined Functions to support your testing needs
- Reusability of Test Scripts
- Test Asynchronous Capability
- Realistic User Scenarios
- Real-world User Emulation
- Server Monitoring Support, no extra cost
- Database Monitoring Support, no extra cost
- Access your test data from anywhere
- Clear and Descriptive Reports/Graphs
- Test Scheduling for Unattended Execution
- Built-in Bug Tracker
- Best Price-Feature Ratio

Key Features

Automatic Script Generation

QEngine automatically generates test scripts to provide an easier and more effective way to test all the published web services in a WSDL with a click of the mouse.



No Learning Curve in Script

Web service scripts are generated as Jython scripts which provides the fastest and easiest way to create, read, and manipulate test scripts, with no programming.

Manual authoring not Mandatory, All are readable functions.

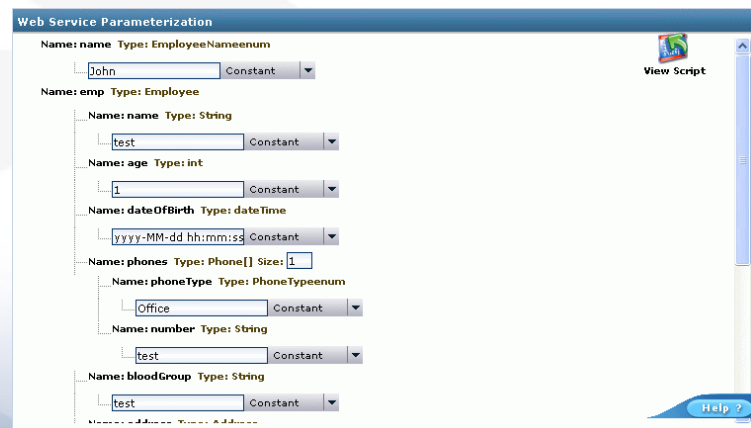
Jython scripts provide more control over testing and have the ability to invoke regular Java classes. It also provides support for looping constructs and conditional statements such as, For, if...else, etc

Data-Driven Test Scripts

Test scripts can be created to send data source values as part of a request to a server with varying input where the values are substituted at runtime from an external database or CSV file.

Array/Complex/ComplexArray Type Argument Support

Parameterization (Providing values for parameters/Arguments of Service methods) for web service functional testing allows you to ensure the validity of a WSDL method to replay the script without any errors and in case of web service performance testing you can simulate a realistic load with different virtual users using different data. The Web-based Parameterization UI provides a drill down view of the input parameters passed to each WSDL method and supports a broad array of data types to test both simple and complex web services.



AdventNet QEngine Web Services Test



Predefined Functions to support your testing needs

Built-in Functions can be inserted to perform response validation, XML validation, database operations, string operations and general functions to customize reporting, display message, save response, etc. This enables you to compare the response received with other data source values.

Reusability of Test Scripts

Test scripts generated for web service functional testing can be re-used for performance testing without any modification in web services. This eliminates re-generation of scripts and allows you to share scripts using the standard Jython language for both functional and performance testing..

Test Asynchronous Capability

This feature supports the testing of asynchronous messages, including notification and alert messages in addition to synchronous RPC capabilities.

Realistic User Scenarios

Intuitive and easy-to-use Load Test Configurator UI allows you to configure multiple user scenarios to emulate the real-user activities. This UI provides extensive configuration options such as repeat delay (user iterations), percentage of load for each user and the order in which the virtual users should be generated to perform the transaction (sequential or random). You can also group the individual user scenarios as user profiles and associate the workload for each user profile as load test cases.

You can also redirect all the operations contained in the script to a different host. This enables you to run the generated scripts against different hosts without re-generating them.

Real-world User Emulation

The tool accurately simulates a large number of virtual users performing a defined set of transactions (or operations) in your web services. This supports various workload types such as steady state workload (Normal), increasing workload (Ramp-up) and repeated load testing for a large number of virtual users based on exit criteria (Burn-in). You can associate each workload configuration with specific or multiple-user scenarios as load test cases to capture the real-life user testing.

Server Monitoring Support, no extra cost

Server Monitoring capability allows you to monitor the resource utilization such as CPU and memory usage of web servers running in Windows/Linux machines. Monitored results are used to generate the reports and graphs.

Database Monitoring Support, no extra cost

Database Monitoring feature allows you to monitor the database parameters for databases such as MySQL, Oracle, etc. Parameters monitored for MySQL include Thread Details, Connection Details, Throughput, Table Related Statistics, etc.

Access your test data from anywhere

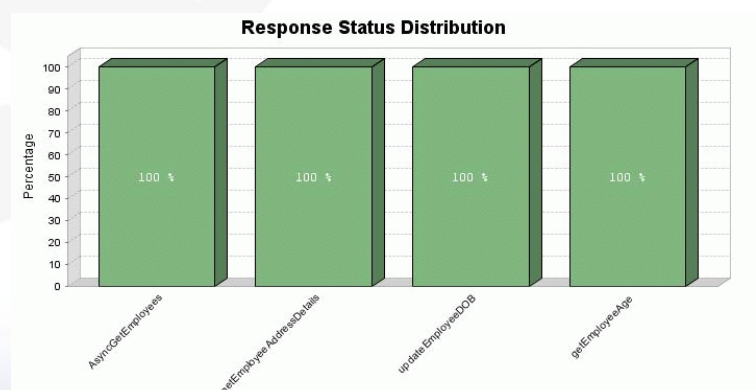
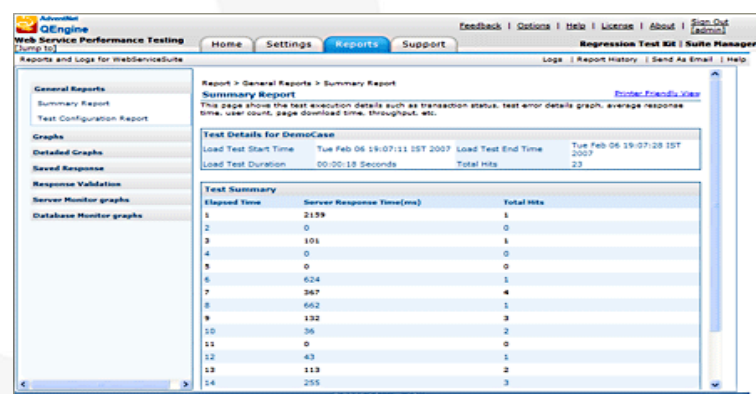
QEngine toolbar enables you to connect to central QEngine test server and log in from any remote machine to access all aspects of your web service testing suites.

Multiple team members can create test suites and perform all operations such as test script generation, functional testing, load test configuration, parameterization, scheduling, reporting and analysis from any geographic location.

Clear and Descriptive Reports and Graphs

Web Service functional testing provides HTML-based reports to indicate the status of the test execution. Hyperlinks allow easy navigation through the report. Summary reports are also generated for test scripts and test cases which links to the passed and failed test cases. This helps to effectively review failures.

Web Service performance testing provides a clear and comprehensive range of reports and graphs to quickly and easily identify the potential bottlenecks in your web services. It displays both summary and detailed reports and graphs that are categorized as response validation report, graphs for user status, time vs hits/sec, response status distribution, performance status, saved responses, server monitoring graphs and database monitoring graphs.



AdventNet QEngine Web Services Test



Test Scheduling for Unattended Execution

Test suites can be scheduled to run at specific time intervals: hourly, weekly, monthly, daily or once only for unattended execution.

Built-in Bug Tracker

Built-in issue tracker (QEngine Issue Manager) helps you to track product defects and manage product enhancement requests. It enables users to log in defects / requests from any geographic location and allows all the team members to access the tracking system from anywhere, anytime. You can also integrate any third-party Bug Tracking Systems to help you track bugs the way you are used to.

Best Price-Feature Ratio

Competitively priced, AdventNet QEngine provides support for test and verification of web services on multiple platforms/browsers. Further, AdventNet offers excellent customer support.

System Requirements

Hardware	PIII 500 MHz 256 MB RAM or higher 120 MB for installation 250 MB for space after installation.
Software	Windows NT 4.0/2000/2003/XP Linux 7.2 & above
Supported Browsers	Internet Explorer 6.0 & 7.0 Mozilla 1.7.6 - 1.7.12 Firefox 1.5.0 & 2.0



AdventNet Inc

4900 Hopyard Rd., Suite 310, Pleasanton, CA 94588. USA

Phone: 1-925-924-9500

Fax: 1-925-924-96 00

Web Site: <http://www.adventnet.com>

For queries on products : sales@adventnet.com

For 24/7 support: qengine-support@adventnet.com

© Copyright 2007 AdventNet Inc. All rights reserved.

About AdventNet

Enabling Management Your Way™

AdventNet provides affordable software for management and provisioning of complex networks, systems and IT applications. With a broad product portfolio and an active customer base ranging from enterprises, equipment vendors and service providers, AdventNet has emerged as a very affordable and high-quality alternative to expensive software that is common in this industry.

AdventNet is headquartered in Pleasanton, CA with offices in NJ, NH, India, UK, China and Japan. It has a well-trained partner base around the globe and thousands of customers world-wide. Visit us at www.adventnet.com.