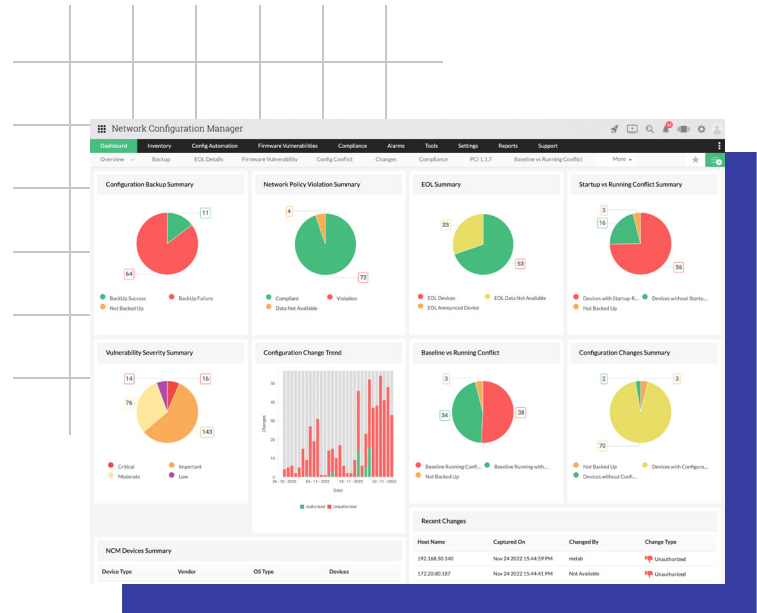


overview

ManageEngine Network Configuration Manager is a multi-vendor-supporting network configuration and change management solution for all your network devices, such as routers, switches, and firewalls. Easy to implement with a user-friendly interface, Network Configuration Manager helps network administrators to efficiently manage huge network infrastructures seamlessly. Also, with its advanced automation capabilities, network administrators can breathe a sigh of relief as they're freed from hectic management overhead.



facts

4000

Trusted by over 4,000 major companies around the globe in different sectors

15

More than 15 years of network infrastructure management and transformation

120

Used across over 120 countries

19

Available in 19 languages

2

Free edition for 2 devices

scalability facts

50000

Up to 50,000 devices can be handled

250

Supports more than 250 device templates

UNLIMITED

Device configurations and User packs

features and highlights

Configuration management

- Configuration backup of switches, routers, firewalls, and other devices
- Discovery and manual addition of network devices
- Encrypted storage of device configurations in the database

Automation and audit

- Script templates called Configlets for bulk task execution
- Detailed trails capturing the who, what, and when of configuration changes
- Detailed reports on inventory, configuration changes, compliance, etc.

Compliance management

- PCI, SOX, and HIPAA provided by default
- Custom policies to meet varied business requirements

Change management

- Real-time configuration tracking and effective change management policies
- Real-time notifications upon change detection
- Quick restoration to trusted configurations
- Role-based access control for devices and configurations
- Contextual, side-by-side comparison of altered configurations

Firmware vulnerability management

- View of devices with firmware vulnerabilities in your network
- Advanced CVE search and remediation measures

product benefits:

- Customizable device templates that support any device vendor
- Remote network operations with Configlets
- Seamless native integration with NetFlow Analyzer, OpManager, Password Manager Pro, ServiceDesk Plus, and ServiceDesk Plus On-Demand
- Third-party integration support with ServiceNow
- Advanced search with multiple conditions across all modules

requirements:

Minimum Hardware requirements:

- 4GB RAM
- 2GHz dual-core or higher
- 100GB of hard disk space

Recommended Hardware requirements:

- 16-32GB RAM
- 3GHz quad-core or higher
- 300-500GB of hard disk space

Software requirements:

- Windows: Windows 8 / Windows 10 / Server 2008 R2, 2012 R2, 2016, 2019, or 2022
- Linux: Ubuntu 14 / Cent OS 7 and above (until 8.5) / Fedora 31 / Redhat7 / Opensuse 15
- Web client: Chrome (preferred) / Firefox / Edge / Internet Explorer 11

Database requirements:

- MS SQL 2019 (from build 125379), 2017, 2016, 2014, 2012, or 2008, or PostgreSQL (bundled with Network Configuration Manager)

Supported protocols:

- SSH/TELNET, SSH/TELNET - TFTP, SSH - SCP, and SSH-SFTP

pricing

Feature	Free	Professional	Enterprise
Starting price	Free (2 devices)	\$595 (10 devices)	\$8395 (250 devices)
Max. devices supported	2	10K	25K
Manage up to 10,000 devices	NA	Yes	Yes
24x5 technical support	NA	Yes	Yes
Multi-site & distributed network configuration management	NA	NA	Yes
Automatic data sync between all probes (multiple sites)	NA	NA	Yes
Smart upgrade: Automatic PPM upgrade for all probes	NA	NA	Yes
Collective data & reports in the central server	NA	NA	Yes

PRODUCT AVAILABILITY ON PREMISES



Manageengine Network Configuration Manager has proven a very useful tool to help Federal Signal, Inc. manage multiple vendors equipment across multiple geographic locations. It has allowed us to effectively manage remote device configurations and implement effective change control for network infrastructure.

Larry Ware, Federal Signal Global Network Boffin

trusted customers



Alcatel-Lucent



at&t



Grab your 30day free trial

Download Free Trial

Get a free demo

Request for a demo

www.manageengine.com/network-configuration-manager/