



ManageEngine



Unified Endpoint Management and Security



Privately held and profitable since its inception

(Est. 1996)



IOT Management Framework

(Est. 1996)



Enterprise IT management solutions

(Est. 2002)



Applications for business, collaboration, and productivity

(Est. 2005)



Technology & Soft-skills Training for local students

(Est. 2005)



Workflow Orchestration Software

(Est. 2021)



All-In-One Training Platform

(Est. 2021)

Bringing IT together

Enterprise service management

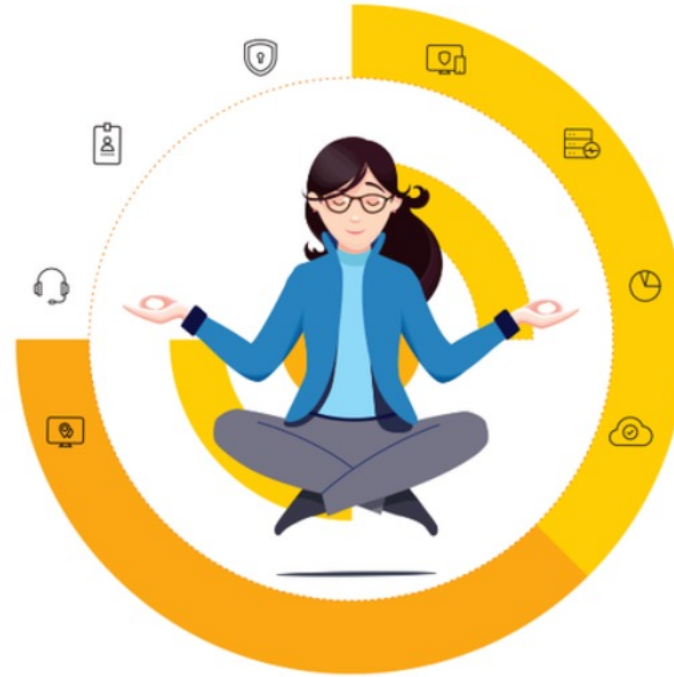
- Full-stack ITSM suite
- IT asset management with CMDB
- Knowledge base with user self-service
- Built-in and custom workflows
- Orchestration of all IT management functions
- Service management for all departments
- Reporting and analytics

Identity and access management

- Identity governance and administration
- Privileged identity and access management
- AD and Azure AD management and auditing
- SSO for on-premises and cloud apps with MFA
- Password self-service and sync
- Microsoft 365 & Exchange management and auditing
- AD & Exchange -backup and recovery
- SSH and SSL certificate management

Security information and event management

- Unified SIEM for cloud and on-premises
- AI driven user and entity behavior analytics
- Firewall log analytics
- Data leakage prevention and risk assessment
- Regulatory and privacy compliance



Unified endpoint management and security

- Desktop and mobile device management
- Patch management
- Endpoint device security
- OS and software deployment
- Remote monitoring and management
- Web browser security
- Monitoring and control of peripheral devices
- Endpoint data loss prevention

IT operations management

- Network, server and application performance monitoring
- Bandwidth monitoring with traffic analysis
- Network change & configuration management
- Application discovery & dependency mapping
- Cloud cost and infrastructure monitoring
- End user experience monitoring
- AIOps

Advanced IT analytics

- Self-service IT analytics
- Data visualization and business intelligence for IT
- Hundreds of built-in reports and dashboards
- Instant, flexible report creation
- Out of the box support for multiple data sources

Available for

Enterprise IT | Managed service providers (MSPs)

as

- Self-hosted on-premises
- Self-hosted in public cloud (AWS, Azure)
- Zoho Cloud-native



ManageEngine:

A bootstrapped, private, and profitable company

20

years in the
industry

280,000+

Organizations across the
globe trust ManageEngine

120+

products and **free tools** for
IT management

4,500+

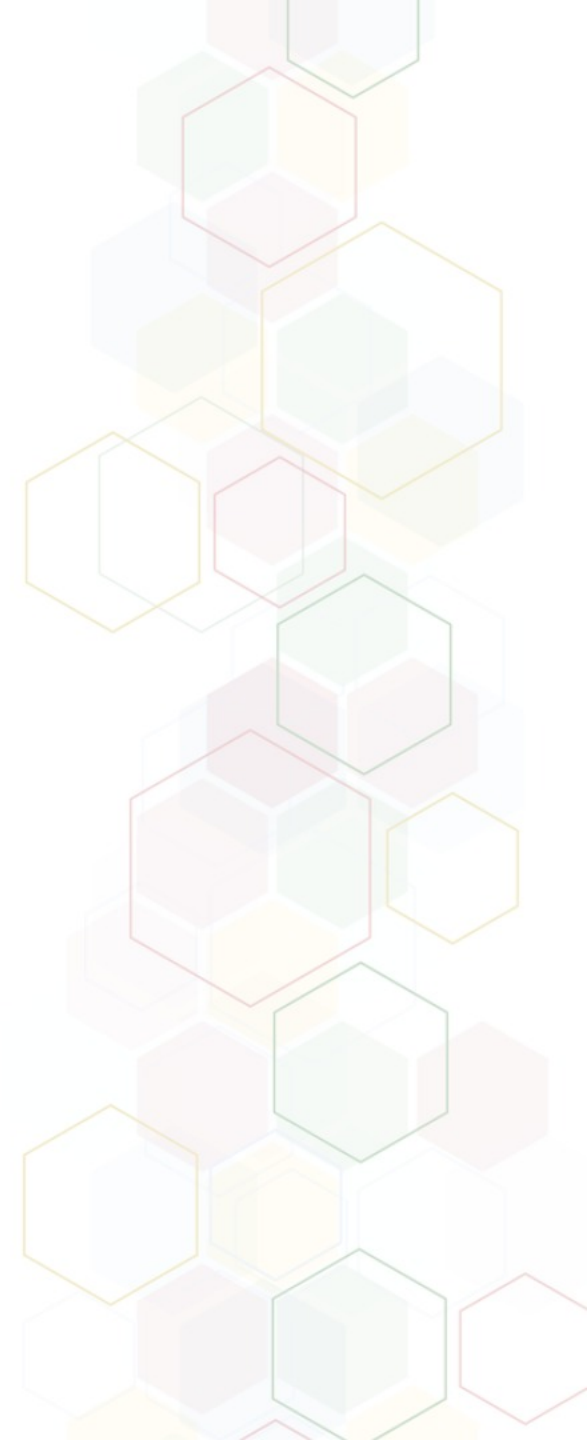
ManageEngine
employees

190

countries

ManageEngine 
Patch Connect Plus

Product overview





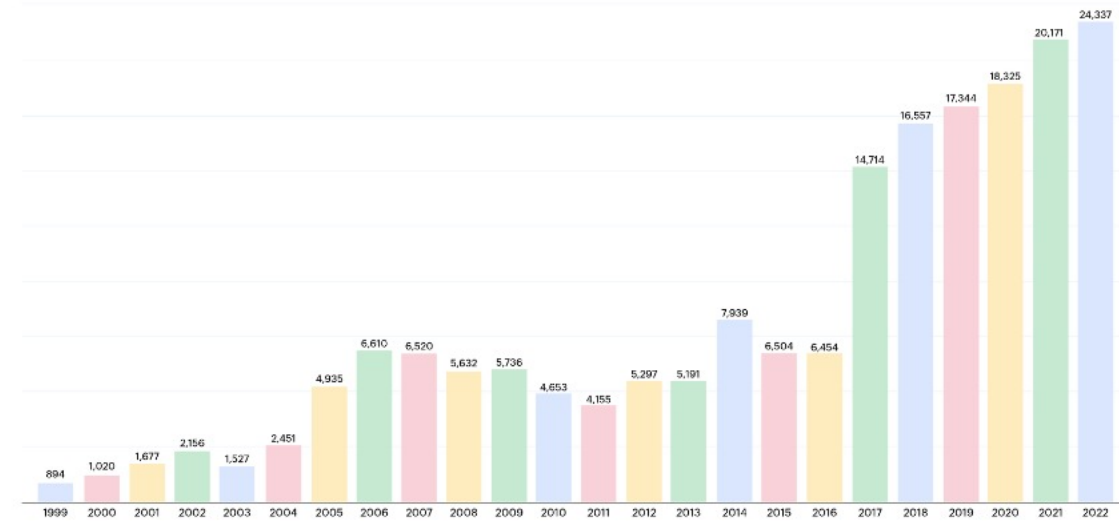
Why do you need to automate patch management?

Old disclosed vulnerabilities on unpatched systems are often the target of cyberattacks

A majority of the most common vulnerabilities targeted in 2020 were disclosed during the past two years (data compiled by the US government)

Reasons:

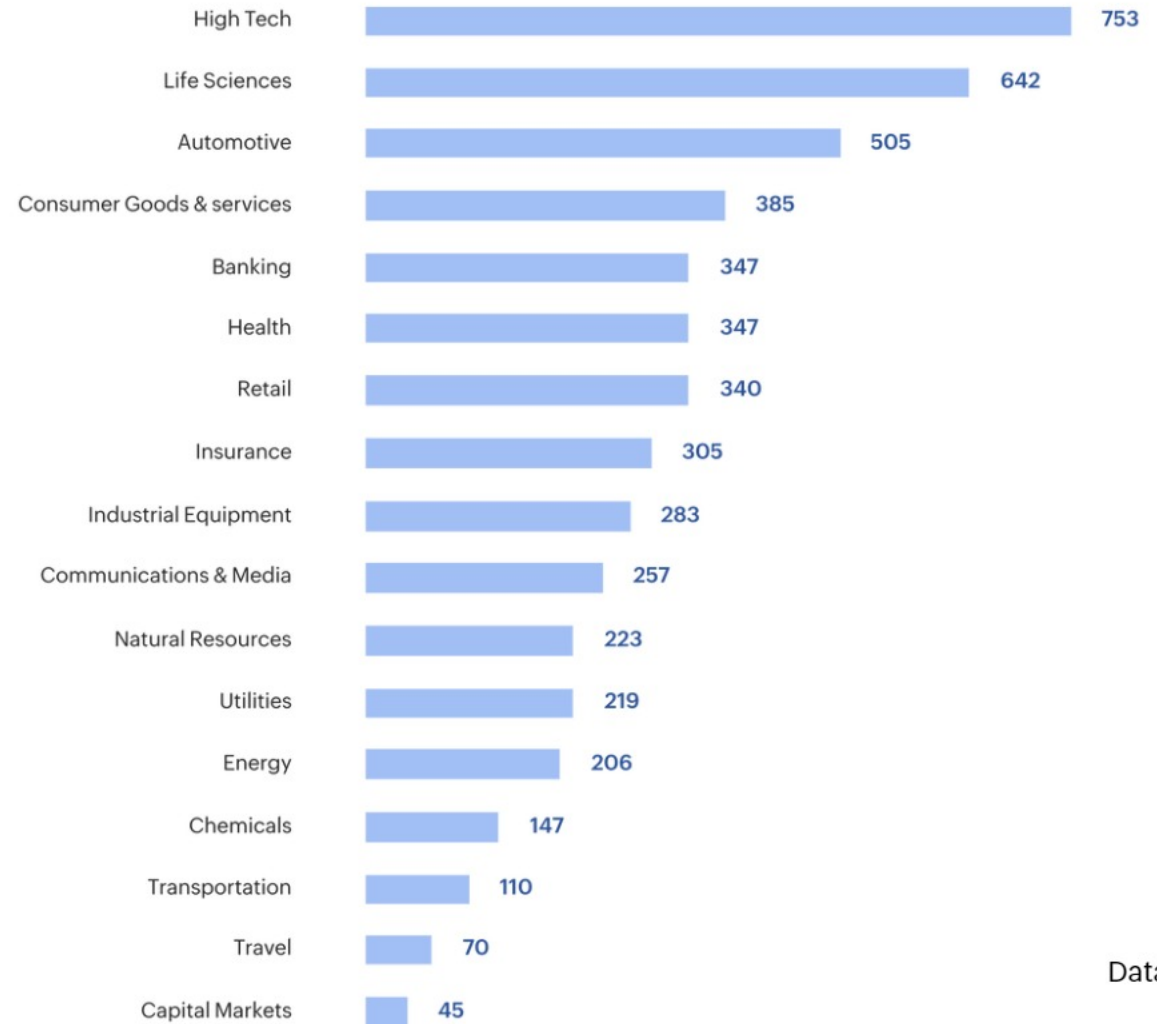
- The number of exploited vulnerabilities is constantly increasing
- A lack of time and resource to patch the ever-increasing number of endpoints in an enterprise



NVulnerability distribution by severity over time, 1999-2022 (Source: [NIST](#))

Negligence in securing your endpoints could cost you greatly

\$5.2Tr



Data in \$Bn

Expected foregone revenue cumulative over the next 5 years. Calculations over a sample of 4,700 global public companies - Source : Accenture research

Effective patch management = Revenue saved in dealing with cyberattacks

- On average, data breaches cost organizations \$3.92 million
- According to a study by Ponemon Institute, 57% of data breaches are attributed to poor patch management

What's worse?

34% of breach victims knew that they were vulnerable before they were breached

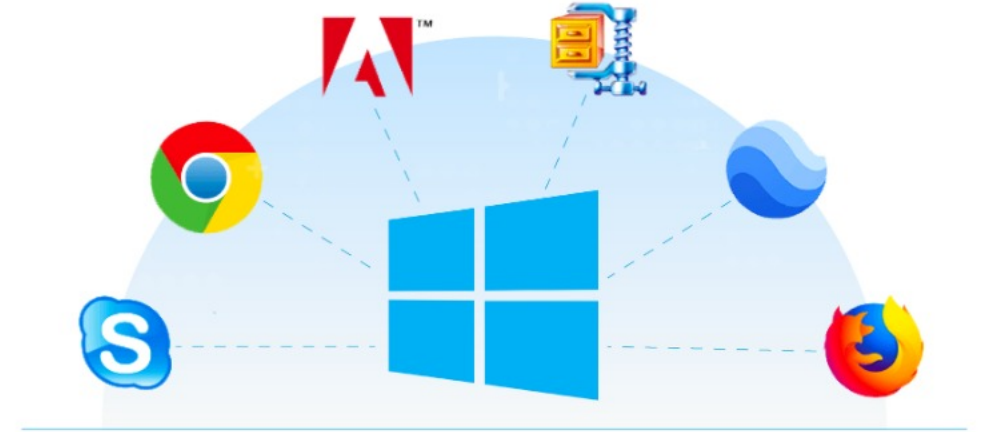




What is Patch Connect Plus?

A single solution for all your patching needs

- Patch Connect Plus provides a single interface from where you can completely automate all your patch management tasks across Microsoft ConfigMgr and Microsoft Intune.
- Patch Connect Plus seamlessly integrates with Intune and ConfigMgr to automatically test and deploy patches for over 600 third-party applications



Highlighted features

- Automated patching across ConfigMgr & Microsoft Intune
- Application management for ConfigMgr & Microsoft Intune
- Fully Customizable delivery of patches and Apps.
- Native Plug-in for ConfigMgr
- Special patch handling for Java and similar Apps
- Timely Reports and Notifications





Patch Connect Plus features explained

Automated patch management

- Completely automate the entire process of patch management, right from identifying missing patches across applications in your network to their timely download and distribution using ConfigMgr and Intune native infrastructure.

Benefits:

- Effective use of available time and resources
- Minimal human intervention reduces the possibility of errors in patching
- Helps achieve 100% compliance status
- Brings down the average time to patch, which is currently 102 days after patches are released






Unified Management across ConfigMgr & Intune

- Single point of management for patches and Applications across ConfigMgr & Intune
- Patch over 600 third-party applications!
- Secure a variety of endpoints, like laptops, servers, desktops, and workstations

Benefits:

- One solution to patch and secure your heterogeneous enterprise IT environments
 - Perfect for current hybrid work environments
- 

Customized Deployment

- Customize deployment policies to cater to all your individualized patching requirements
- Leverage the pre- and post-deployment settings to further streamline your patching and reboot process



Benefits:

- Completely control when you want your machines to be patched and how you want them rebooted
- Create scripts to perform unique and environment-specific pre- and post-deployment activities



SCCM Right-Click Tools

- Adds essential administrative functions to ConfigMgr, helping you assess and troubleshoot end user machines right from the console.
- Carry out client troubleshooting tasks, systems management and On-demand client operations.
- Perform Shutdown/Reboots, assess Bitlocker status, Control Panel, Command Prompt alongside other Utility tools.

Benefits:

- Eliminates the need for additional tools that cater to systems administration for ConfigMgr
- Saves considerable efforts and capital in the long run.

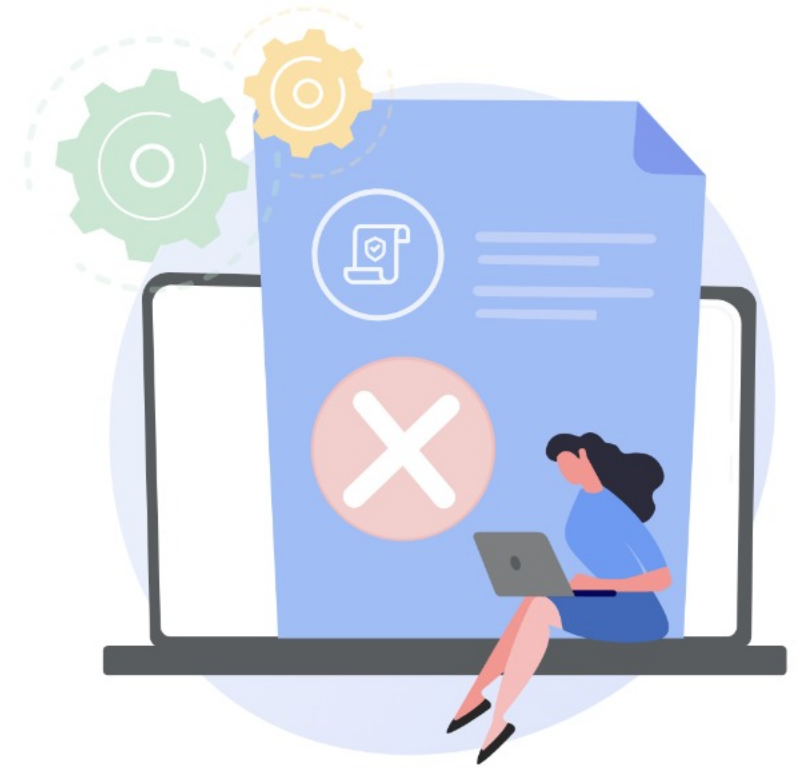


Native Plug-in for SCCM

- Access to complete list of third-party updates under one roof!
- Deploy non-Microsoft Applications right from the Plug-in
- Access to complete reports on Client machines

Benefits:

- Streamlines patch management workflows for ConfigMgr
- View and download reports for further analysis or enhancements.



Import CVEs

- View and fix the latest vulnerabilities affecting the endpoints in the network.
- Perform need-based vulnerability mitigation by importing CVEs into the console
- Publish patches to ConfigMgr and Intune that are automatically mapped based on the CVE details.

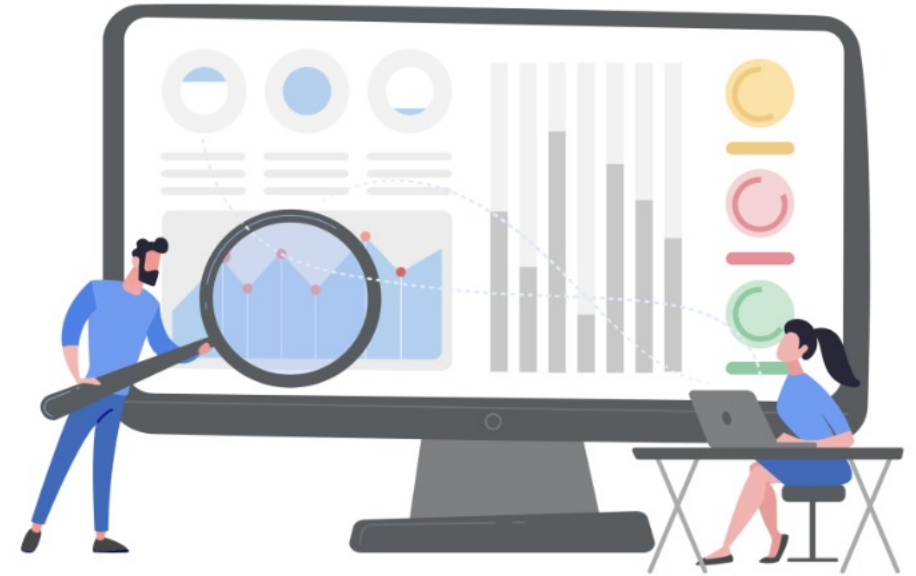
Benefits:

- Perform vulnerability detection and mitigation in real time to enhance the security of the endpoints in your network.
- Increase productivity and security by leveraging automation and limiting manual dependency on IT admins.



Insightful reports

- Get a complete list of all the patches installed on the endpoints
- Offers a compliance score for the computers present in your network
- Provides detailed information on the computers that have failed to install a specific patch
- Save your time from troubleshooting by displaying the systems that are generating deployment error codes, and links to a relevant help doc.




Benefits:

- Complete visibility into the entire patching process
- Detailed reports for all your auditing needs



How Patch Connect Plus benefits your organization

- Reduces the capital and effort spent on patch management
 - Eliminates 90% of the time spent on patching
 - Provides an integrated console
 - Supports heterogeneous environments
 - Delivers maximum endpoint security
 - Flexible and easy to use
- 

To learn more, visit:

www.manageengine.com/sccm-third-party-patch-management/

Try it for free!

www.manageengine.com/sccm-third-party-patch-management/free-trial.html

