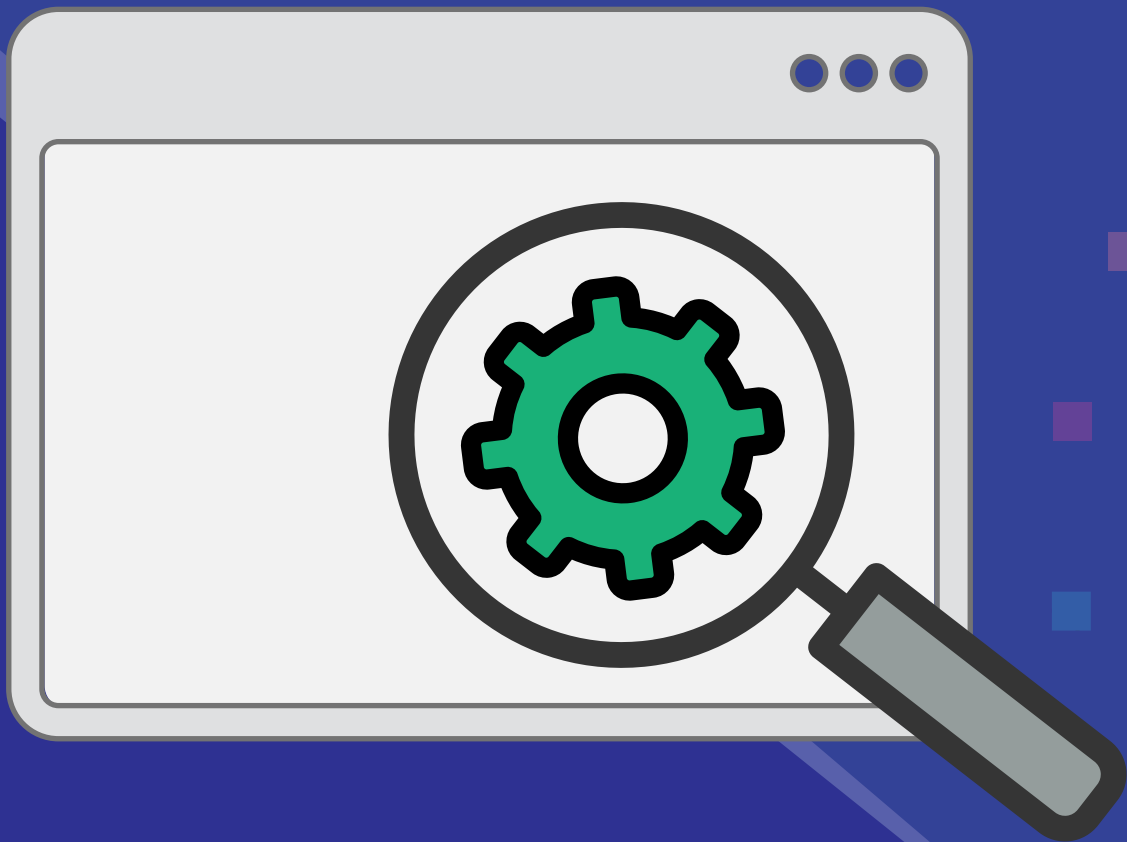


Find a GPO's

Administrative Template setting using quick search



Find a GPO's Administrative Template setting using quick search

With over 3,000 Administrative Template settings, managing all these Group Policy settings just isn't easy. Often you might know only a few keywords relating to a particular setting; you might not even be sure whether it is a Computer Configuration setting or a User Configuration setting. We know how difficult it is to navigate through each User or Computer Configuration setting folder to find the right setting.

ADManager Plus offers a search option to help you quickly find settings across User Configurations and Computer Configurations, and make changes to the Administrative Template settings once you've found them.

The screenshot shows the 'Edit GPO Settings' window. On the left is a tree view of the GPO structure, including 'Computer Configuration', 'Policies', 'Administrative Templates', and 'User Configuration'. The main area displays a search results table for the term 'storage'. The table has columns for 'Settings', 'State', and 'Path'. A search bar at the top left of the table contains the text 'storage', and a 'Select State' dropdown menu is set to 'Not Configured'. A 'Search Path' input field is also visible.

Settings	State	Path
All Removable Storage classes: Deny all access	Not Configured	\System\Removable Storage Access
All Removable Storage: Allow direct access in remote sessions	Not Configured	\System\Removable Storage Access
Allow only USB root hub connected Enhanced Storage devices	Not Configured	\System\Enhanced Storage Access
Configure list of Enhanced Storage devices usable on your computer	Not Configured	\System\Enhanced Storage Access
Disable binding directly to IPropertySetStorage without intermediate layers.	Not Configured	\Windows Components\File Explorer
Disallow locally attached storage as backup target	Not Configured	\Server
Do not allow non-Enhanced Storage removable devices	Not Configured	\System\Enhanced Storage Access
Do not allow password authentication of Enhanced Storage devices	Not Configured	\System\Enhanced Storage Access
Do not allow Windows to activate Enhanced Storage devices	Not Configured	\System\Enhanced Storage Access
Lock Enhanced Storage when the computer is locked	Not Configured	\System\Enhanced Storage Access
Ping the settings storage location before sync	Not Configured	\Windows Components\Microsoft User Experience Virtualization
Prevent the usage of OneDrive for file storage	Not Configured	\Windows Components\OneDrive
Prevent the usage of OneDrive for file storage on Windows 8.1	Not Configured	\Windows Components\OneDrive
Set application cache storage limits for individual domains	Not Configured	\Windows Components\Internet Explorer\Internet Control Panel\General Page\Browsing History
Set default storage limits for websites	Not Configured	\Windows Components\Internet Explorer\Internet Control Panel\General Page\Browsing History
Set indexed database storage limits for individual domains	Not Configured	\Windows Components\Internet Explorer\Internet Control Panel\General Page\Browsing History
Set maximum application cache storage limit for all domains	Not Configured	\Windows Components\Internet Explorer\Internet Control

Figure 1: Searching in Administrative Template settings for the required settings.

This simple but powerful search option gives you a detailed view of all the settings related to your search term. Here, you can also filter the settings further based on the setting's state: whether it is Enabled, Disabled, or Not Configured. Want to narrow your search based on the path of a setting? Simply use the Path option. Once you've found the settings that need to be changed, you can adjust the configurations as needed

How to search and edit Administrative Template settings using ADManager Plus

To search and edit the Administrative Template settings of a GPO:

1. Click the **Management** tab.
2. Navigate to **GPO Management** and click **Manage GPOs**.
3. Click **Select Domain**, then choose the **domain** where the required GPOs are located.
4. Click the **Edit** icon in the *Actions* column of the GPO you would like to edit.
5. From the *Edit GPO Settings* window, enter the **search terms** related to the setting you're looking for.
6. Click the **setting** you would like to edit.
7. In the window that opens, you can **Enable**, **Disable**, or **Not Configure** the setting.
8. Make any other changes required in the space provided below Options.
9. Click **Apply** to apply the modifications made to that setting.

Our Products

AD360 | Log360 | ADAudit Plus | ADSelfService Plus | M365 Manager Plus | RecoveryManager Plus

ManageEngine ADManager Plus

ADManager Plus is an identity governance and administration (IGA) solution that simplifies identity management, ensures security, and improves compliance. With ADManager Plus, manage the user life cycle from provisioning to deprovisioning, run access certification campaigns, orchestrate identity management across enterprise applications, and protect data on your enterprise platforms with regular backups. Use over 200 reports to gain valuable insights into identities and their access rights. Improve the efficiency of your IGA operations with workflows, automations, and role-based access control policies. ADManager Plus' Android and iOS applications help with on-the-go AD and Azure AD management. For more information about ADManager Plus, visit manageengine.com/products/ad-manager/.

\$ Get Quote

↓ Download