

ManageEngine OpUtils

Starts at
\$345

Why waste time in tracking IP addresses and Switch Ports manually?

Network and system engineers face the challenge of ensuring high performance and availability of IT resources - servers, routers, switches, applications, and infrastructures. They have to constantly keep an eye on these IT resources and troubleshoot any problems that may occur quickly.

ManageEngine introduces OpUtils - an affordable, intuitive, integrated IP Address Manager, Switch Port Mapper and rogue detection solution. It provides holistic visibility and control over your network address space by end-to-end mapping and scanning of IP addresses, and switch ports. This web-based, cross-platform tool runs on Windows and Linux. It also has more than 30 networking tool sets which can be used to troubleshoot the frequent network problems such as network connectivity, availability, performance, health, and latency of any IP node in the network.

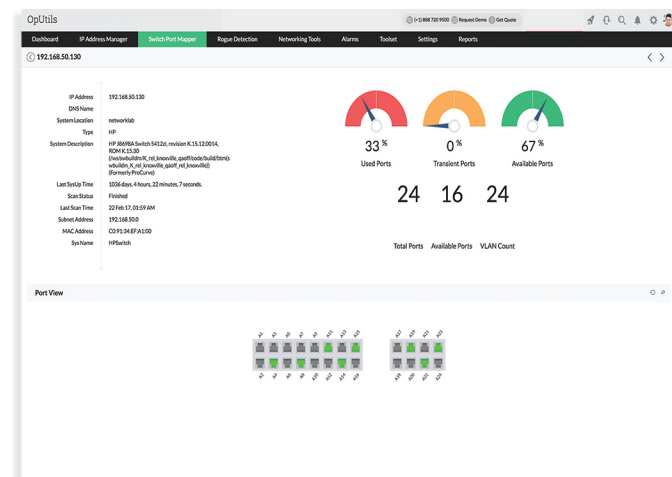
The different sets of tools available in OpUtils are:

IP Address Management

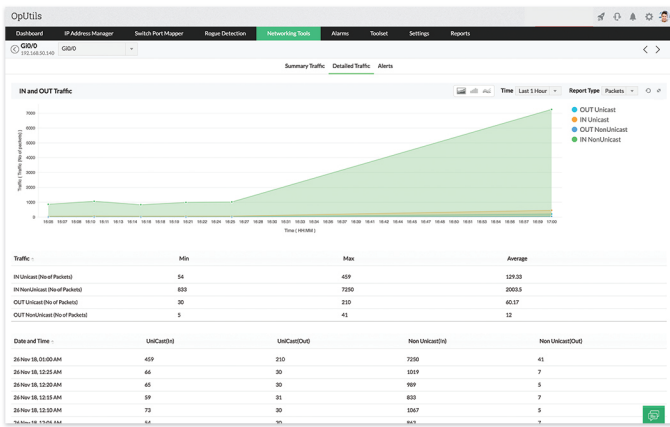
IP Address Manager helps track your IPv4 and IPv6 addresses, subnets, and supernets. It enables network admins to group, and scan subnets in real time using an advanced IP scanner. Secure your network from IP conflicts by leveraging the IP request tool. Track IP history, configure alerts, schedule scans and receive granular and valuable IPAM reports.

Switch Port Management

OpUtils' Switch Port Mapper discovers the devices plugged into each port of a specified switch. Gain visibility into access, trunk, stacked ports and devices connected to virtual IPs. This solution helps you visualize the mappings of ports using Port View tab. Track switch port history, device change information, configure alerts, schedule scans and receive valuable SPM reports.



Support : oputils-support@manageengine.com | **Forums** : <https://pitstop.manageengine.com/portal/en/community/opmanager/oputils> | **Help Document** : <https://www.manageengine.com/products/oputils/help/> | **Request a free Demo** : <https://www.manageengine.com/products/oputils/download.html> | **Live Online demo** : <https://demo.oputils.com/> | **Tech Videos** : <https://www.manageengine.com/products/oputils/videos.html>

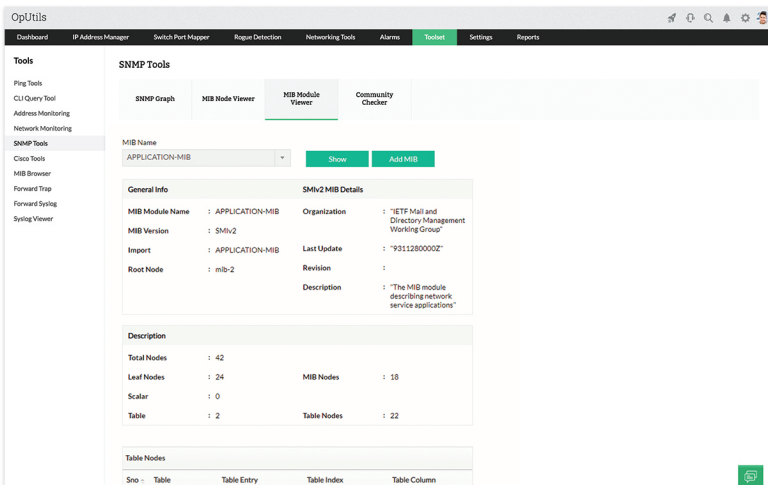


CISCO Tools

Cisco tools manages the Cisco configuration files: Backup, Retrieve, Compare, and Upload. It also scans a subnet and range of IP addresses to collect the details of the Cisco devices.

Diagnostic Tools

Diagnostic tools is a collection of generic utilities, for day-to-day management of the system and network. The tools can be used to troubleshoot, debug connectivity issues, packet loss, and latency issues in a LAN environment.



Customer Success Story



"OpUtils has provided us with a detailed and intuitive interface to easily manage our IP space and switch ports. We can easily find any system on our network through their switch port mapper tool and also quickly identify possible security violations."

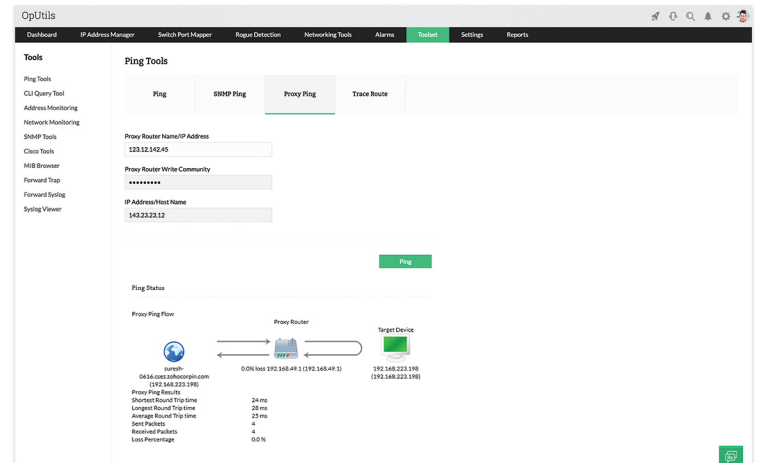
- Nichole K. Boscia, CSC
Sr. network engineer, NASA Ames Research Center, advanced super computing division

Rogue Device Detection

OpUtils periodically scans routers and subnets to detect any new systems and devices found in the network. With the help of AD integration, OpUtils automatically maps the trusted devices and lets you weed out rogue devices. It enables you to manually import trusted devices and mark devices based on their authenticity (Guest, Rogue, or Trusted) for more control. Block switch ports through which the rogue devices are trying to connect.

Bandwidth Monitoring

The Bandwidth Monitor tool provides the real-time network traffic details for any SNMP device. It provides the bandwidth usage details both on at interface-level and at the device-level. It uses SNMP to fetch the bandwidth utilization info of a network interface.



SNMP Tools

SNMP tools perform basic SNMP operations, such as viewing the details of a MIB node, periodically querying the given SNMP device for the specified OID value to plot results in a graph.

Address Monitoring Tools

Address monitoring tools helps monitor and manage IP addresses, MAC addresses and DNS names. These tool monitors the Dynamic Host Configuration Protocol (DHCP) scopes to identify the used and available IP addresses in each scope and also views the TCP connections established in the device.

Trusted By



ManageEngine

ManageEngine (A division of ZOH0 Corp.),
9500, Hopyard Rd, Pleasanton, CA 94588. USA.

Web Site: <http://www.manageengine.com> | For queries on products : sales@manageengine.com
For 24x7 support : oputils-support@manageengine.com | Toll free: +1-888-720-9500