

Required permissions and privileges



Document summary

SharePoint Manager Plus can be used to manage, audit, monitor, report on and back-up your SharePoint Online and on-premises environments. The product requires certain privileges to carry out these operations. This guide elaborates on all the necessary roles and permissions required to make the product run without any hiccups.

Required permissions

SharePoint Manager Plus requires an account with the Global Administrator privilege to perform all the operations in your SharePoint Online environment. In case your organization restricts the usage of Global Administrator or you don't want to use it, you can use a service account and assign the following minimum required permissions below.

SharePoint Manager Plus requires an account with the Farm Administrator and built-in administrator group privilege to perform all the operations in your SharePoint on-premises environment. If your organization restricts the usage of Farm Administrators, you can use a service account and operate with the minimum required permissions below.

Click on the links below to see the permissions required for your environment.

- [SharePoint Online](#)
- [SharePoint on-premises](#)

SharePoint Online

Permissions required for service account

These permissions should be assigned to the service account used to configure the SharePoint Servers in SharePoint Manager Plus.

Modules	Permissions needed
Reporting, management, and migration	SharePoint Administrator from Microsoft 365 Admin Center .
Auditing	Audit Log and View-Only Audit Logs roles from the Exchange Admin portal or Exchange Administrator role from the Microsoft 365 Admin Center .

Note: The site collection admin permission is required for the respective site collections to perform any operations if Azure application is not configured.

Permissions required for Azure application

These permissions should be assigned to the Azure application used to configure the SharePoint Servers in SharePoint Manager Plus.

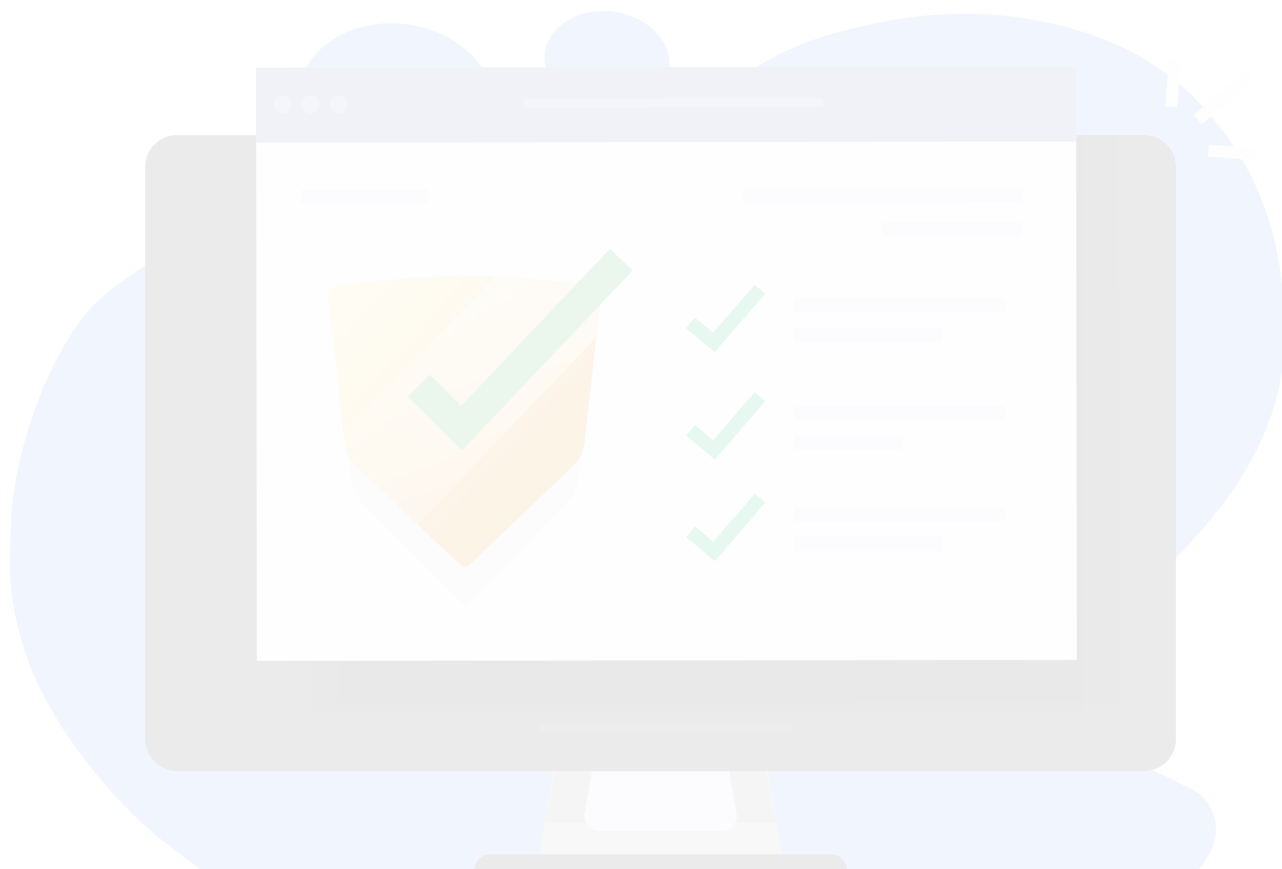
Modules	API	Permissions needed
Reporting, management, and migration	SharePoint	Sites.FullControl.All
Auditing	Office 365 Exchange Online	Exchange.ManageAsApp
Monitoring	Office 365 Management APIs	ServiceHealth.Read
Mail server	Microsoft Graph	SMTP.Send

SharePoint on-premises

These roles and permissions, or minimum scope, should be assigned to the service account used to configure the SharePoint Servers in SharePoint Manager Plus.

Note: The site collection admin permission is required for the respective site collections to perform any operations.

Modules	Permissions needed
Reporting, management, and migration	<ul style="list-style-type: none"> User should be a member of the default administrator group of the SharePoint Server. User should be a member of the Farm Administrators group. Open Central Web Administration and add the user to the Farm Administrator group. Requires this GPO setting if the product is not installed on a SharePoint server.
Auditing	Site collection audit settings must be enabled for the respective site collections.
IIS log reports	User should be a member of the default administrator group of the IIS server.



Our Products

AD360 | Log360 | ADManager Plus | ADAudit Plus | ADSelfService Plus

M365 Manager Plus | RecoveryManager Plus

ManageEngine SharePoint Manager Plus is a tool that helps you to manage, audit, report both the on-premises and Office 365 SharePoint environments. It also allows you to monitor, track and analyze all the activities in your SharePoint infrastructure which facilitates informed, timely and accurate decision making and management.