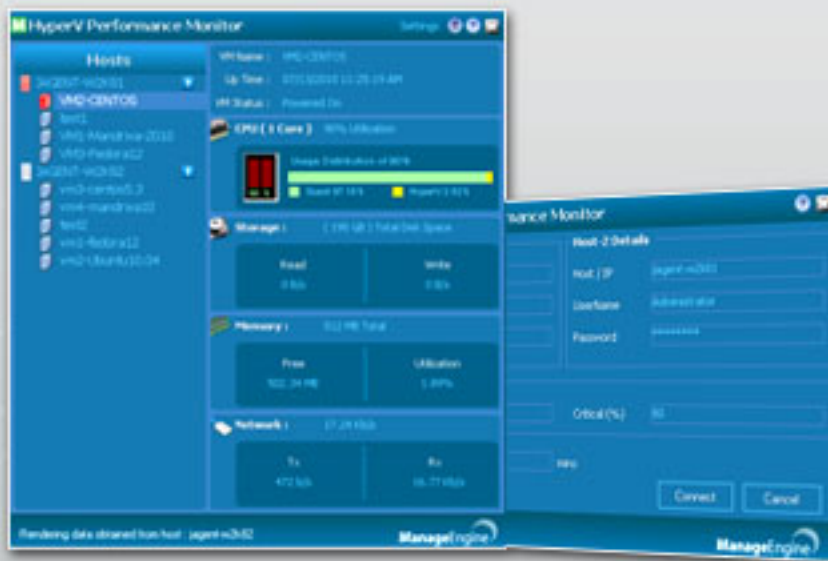


# ManageEngine Free Tools User Manual



## HyperV Performance Monitor Tool

## Free HyperV Performance Monitor

### Introduction

Hyper-V Performance Monitor helps an IT Admin to monitor up to 2 host Windows servers and the VM's running on them. The supported versions include Hyper-V Server 2012 R2, Hyper-V Server 2012, Hyper-V Server 2008 R2 and Hyper-V Server 2008.

### Overview

Hyper-V Performance Monitor provides a dashboard view of the following parameters:

- Host Name/IP Address
- Windows OS version
- System up time
- CPU utilization
- Memory utilization
- Disk read requests
- Disk write requests
- Number of packets received (Rx)
- Number of packets sent (Tx)

The tool fetches these parameters for the host server too and provides a count of the number of VM's configured on it.

### Settings Dialog

Using this tool, Adminis can monitor two hosts and unlimited number of VM's running on them at the same time. Click on the settings icon to fill the following details.

- Host Name/IP Address
- UserName
- Password

Set thresholds for CPU usage at 2 levels - warning and critical. The default threshold parameters are 60% and 80% respectively for warning and critical. The tool refreshes the data at the specified refresh interval given in minutes and is seat at a default value of 5 mins. Both refresh interval and CPU threshold can be configured at the required level to ensure optimal performance.

Clicking on "Connect" button establishes connection with your servers and closes the settings window.

## **Hyper-V Performance Report & Email**

Click on report icon (to the left of help icon in top band). The report opens in a pop-up window with provisions to save (PDF), print and send email.

### **Note:**

1. By default, the reports are saved in My Documents folder with the naming convention server name\_date time (can be changed if required).
2. Configure your mail settings before emailing the performance reports. Click on the 'Send' in the report pop-up window. In the 'Mail settings window' that pops up, click the drop down button next to 'Settings' and configure your email settings. This is a one time activity and can be changed whenever required. Enter the recipient email id and click on send.

## **Refresh**

Click on refresh icon to update the data in real time.

## **Retaining Settings**

All the details entered in the settings tab are retained for subsequent usage.