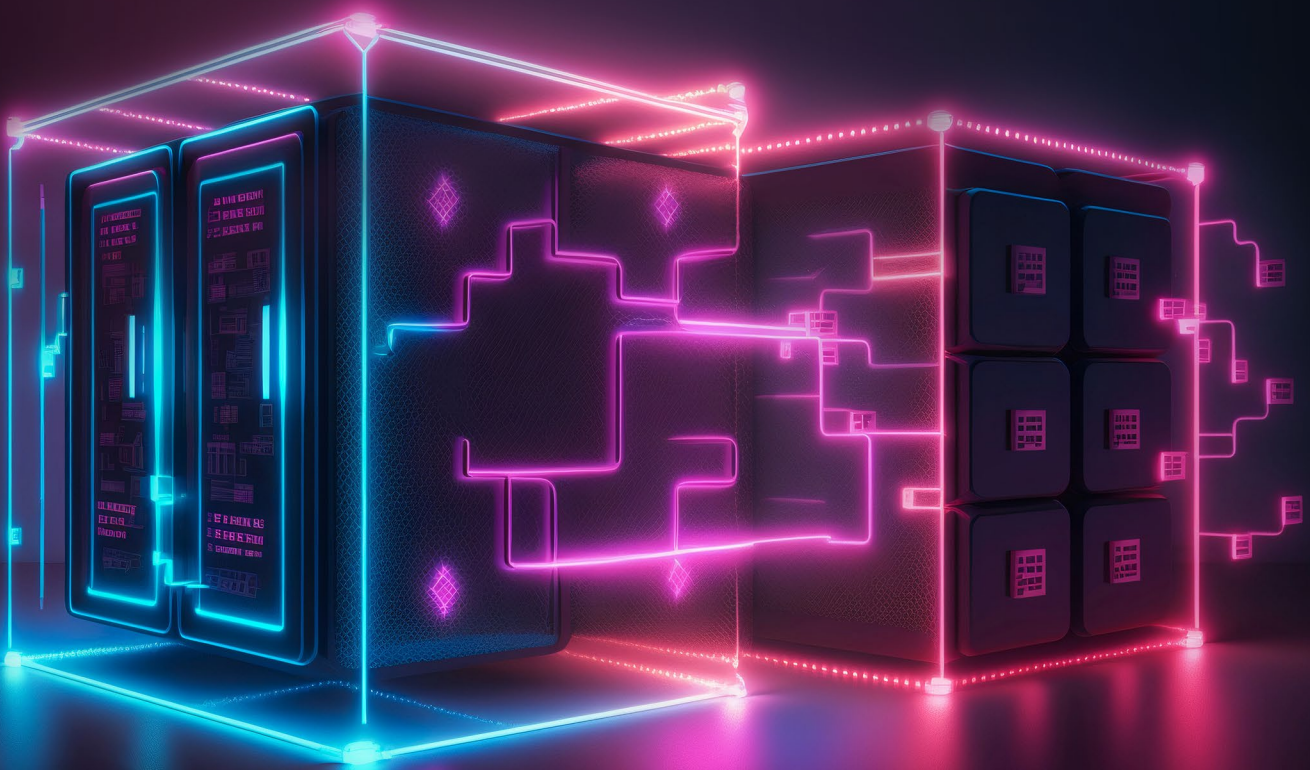


Encryption and data storage in ADManager Plus database



Introduction

In today's world, where data security and privacy are big concerns, organizations need to take strong measures to protect their most valuable asset, which is data. ADManager Plus simplifies user provisioning, automation, reporting, and security, empowering you to efficiently manage your Active Directory environment. In ADManager Plus, we employ robust encryption and data storage measures to safeguard your valuable information.

Encryption in the ADManager Plus database

ADManager Plus' database uses the following encryption methods to store sensitive data:

Database	Encryption method
PostgreSQL	AES-256-CBC
Microsoft SQL	AES-256-CBC

The following sensitive information is encrypted and stored in the database:

Functionality	Encryption standard used for storage	Data Type
ADManager Plus Technician credentials	Hashed password BCrypt Algorithm with SALT	CHAR
AD Domain Setting credentials	AES-256 Encryption	SCHAR
Mail Server and SMS Gateway Credentials	AES-256 Encryption	SCHAR
Technician's Auth Tokens	AES-256 Encryption	SCHAR
DB Password	AES-256 Encryption	Encrypted text
Proxy Settings	AES-256 Encryption	SCHAR
Export result and DB backup - Password	AES-256 Encryption	SCHAR
Encrypt Key store Password - SSL	AES-256 Encryption	SCHAR
Microsoft 365 Account credentials	AES-256 Encryption	SCHAR

End Users Password - Audit data	AES-256 Encryption	SCHAR
External Integration - Account details	AES-256 Encryption	SCHAR
Username and password of high availability settings	AES-256 Encryption	SCHAR

Our Products

AD360 | Log360 | ADAudit Plus | ADSelfService Plus | M365 Manager Plus | RecoveryManager Plus

ManageEngine ADManager Plus

ADManager Plus is an identity governance and administration (IGA) solution that simplifies identity management, ensures security, and improves compliance. With ADManager Plus, manage the user life cycle from provisioning to deprovisioning, run access certification campaigns, orchestrate identity management across enterprise applications, and protect data on your enterprise platforms with regular backups. Use over 200 reports to gain valuable insights into identities and their access rights. Improve the efficiency of your IGA operations with workflows, automations, and role-based access control policies. ADManager Plus' Android and iOS applications help with on-the-go AD and Azure AD management. For more information about ADManager Plus, visit manageengine.com/products/ad-manager/.

\$ Get Quote

↓ Download