

- Diverse Applications and Servers in your business environment?
- Failed Web Transactions affecting the business?
- Taking too much time to troubleshoot a problem?

Manage Application Performance in Physical, Virtual & Cloud Environments

Many businesses today have adopted virtualization and cloud computing as part of their overall IT strategy in order to reduce costs, improve efficiency and increase scalability. As a result, business applications run in a complicated mixture of physical, virtual and cloud entities. However, managing them need not be complicated if IT departments have the right management solution in place.

ManageEngine Applications Manager provides deep-dive component monitoring that spans application servers, servers, databases, middleware, web transactions, virtual resources, cloud services, and more – all this from a single management console. It renders a holistic view of your IT infrastructure, helps in detecting problems before they affect your end users, identifies root cause of problems, and helps in trend analysis through performance reports.

Key Features

- Support for 50+ applications out-of-the-box
- Virtualization and Cloud Monitoring
- End-User Experience Monitoring
- Performance Reporting and Capacity Planning
- Operational Intelligence Speeds Root Cause Analysis

Success Stories

“ We managed to save tens of thousands of dollars by switching from CA's Wily Introscope. ”

Bill Bohlen, Hallmark Channel

Live Demo : <http://demo.appmanager.com>

Website : <http://manageengine.com/apm>

Online Store : <https://store.manageengine.com/apm>

Contact : appmanager-support@manageengine.com

Toll Free No : +1-888-720-9500

Server Monitoring

IBM AS400/iSeries, Windows, Linux, HP-Unix, Tru64 Unix, Novell, Mac OS, and FreeBSD using SNMP, WMI, Telnet or SSH.

Virtualization Monitoring

Multi-vendor support - VMware ESX / ESXi & Microsoft Hyper-V. Auto-discovery and mapping through vCenter server. Supports automated virtual machine management.

Cloud Monitoring

Amazon EC2 & RDS instances, EBS volumes, S3 buckets, Windows Azure.

Application Server Monitoring

WebLogic, IBM WebSphere, Oracle AS, Tomcat, JBoss, GlassFish, Microsoft .Net, VMware vFabric tc Server and SilverStream servers.

Database Monitoring

Oracle, MySQL, DB2, Sybase, MS SQL, PostgreSQL, Cassandra, MongoDB, Memcached.

Java Transactions Monitoring

Java EE Web Transactions, Java Runtime, support for all major JVMs.

Middleware / Portal Monitoring

Microsoft Message Queue(MSMQ), IBM WebSphere MQ, VMware vFabric RabbitMQ, MS Office SharePoint and WebLogic integration.

Services Monitoring

JMX Applications, Network Services, SNMP, DNS, LDAP, SFTP, FTP, Telnet, Active Directory, etc.

Web Servers & Web Services Monitoring

Monitor performance of Apache Server, IIS, PHP, etc. and SOAP Web Services.

High Scalability & High Availability Architecture

Enterprise Edition's distributed architecture scales for thousands of servers & applications.

Fault Management

Root Cause Analysis, Anomaly Detection, multiple alert types based on Thresholds.

Integrated Network and SAN Monitoring

Integrated with ManageEngine OpManager and OpStor for network and SAN monitoring. Use REST APIs to integrate data into external portals.

SLA Management

Define Business Services & track SLAs. Integrated Google Maps to empower your business views.



Mobile Access

Native iPhone app and browser-based mobile web to access from smartphones.

ERP Monitoring

SAP Server, SAP CCMS, Oracle E-Business Suite.

End User Experience Monitoring

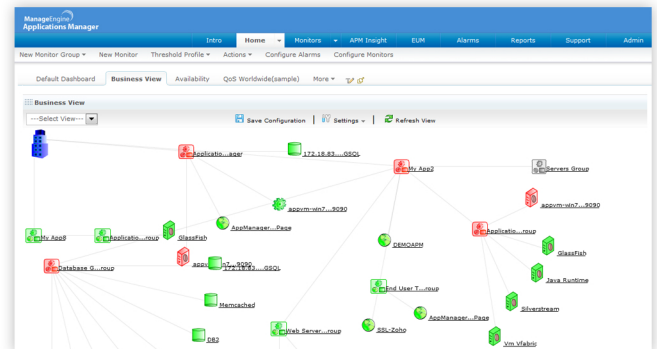
Track user experience of web transactions using real browser monitoring. Also, ensure critical network services such as ping, DNS, LDAP & mail server are working well from branch offices.

Web Application Monitoring

Monitor performance of applications in Java, .Net & Ruby on Rails environments. View Apdex scores for user experience measurement, transaction traces, database calls and metrics from URL to the SQL query.

Custom Application Monitoring

Monitor custom apps by associating in-house scripts or monitoring code written in any programming language.



Trusted By



Live Demo : <http://demo.appmanager.com>

Website : <http://manageengine.com/apm>

Online Store : <https://store.manageengine.com/apm>

Contact : appmanager-support@manageengine.com

Toll Free No : +1-888-720-9500