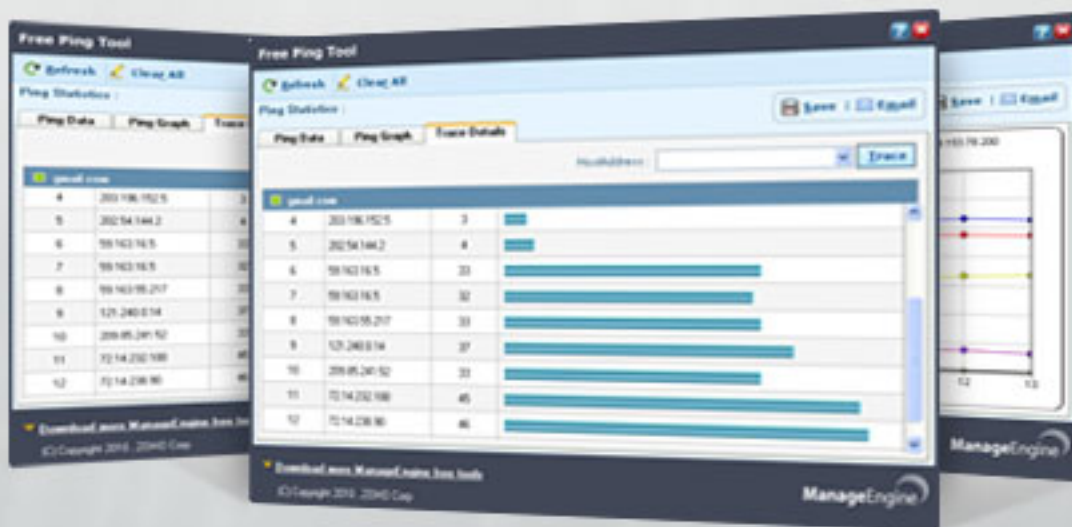


ManageEngine Free Tools User Manual



Free Ping Tool

Table of Contents

OVERVIEW.....	2
FEATURES.....	4
DOCUMENTS.....	7
SYSTEM REQUIREMENTS.....	10
FAQ.....	11

Overview

Free Ping Tool

In the complex network environment, various servers and devices such as routers, switches are need to be up and running all the time . Any outages of these servers and devices will affect the performance of the network usage and eventually, it will affect many users. Similarly, you cannot leave your website availability to chance, more so in today's internet economy where most businesses depend on their websites for revenue. Therefore, it is highly imperative that you monitor your internal servers and devices in LAN environment and also web sites externally at all times so that you become aware of problems early enough before it translates into substantial loss of revenue.

The ManageEngine "Free Ping Tool" will address this monitoring requirement. The ManageEngine Ping Tool, using ICMP Ping, monitors the availability of servers, routers, switches and mail servers internally and more importantly websites externally. The tool fetches important parameter like Round trip time, Time to Live of the packet, presents them as visually elegant running graphs and reports. The relevant data, graphs and reports are displayed in a desktop tool dashboard providing wealth of information about the real time functioning of the servers and websites.

The ManageEngine "Free Ping Tool" can monitor 10 servers and websites simultaneously. The best part is that the tool is made available, absolutely FREE of cost.

Monitor your servers, devices and websites using ManageEngine Free Ping Tool

Free Ping

ManageEngine Free Ping Tool provides an exclusive monitoring of server, switch, router and websites as a desktop tool dashboard. It shows the actual round trip time of servers internally and also for the external websites.

In case of non-availability of servers then alert signal are shown in the dashboard. If at all, server goes down or non-availability of server due to other network problem or response time increases alarmingly than the desired level. The IT administrator can then

effortlessly manage instances to prevent server crash, or bring back the servers to normal functioning state. [Read more.](#)

Free TraceRoute

The traceroute helps to find the full trace path of the server/host internally and externally. Tool also shows Round trip time, Number of hops it takes to reach remote destination. These parameter are presented in a neat graphical view. [Read more.](#)

The ManageEngine Free Ping Tool serves as a smart desktop tool that continuously monitors servers across your network and also external websites for their availability and gives traceroute, giving you simple yet real-time network monitoring solution.

Features

Free Ping Tool

The ManageEngine Free Ping tools helps the administrators to monitor the availability servers, devices and websites continuously and ensures that these servers, devices are running properly in real-time environment using the ICMP ping request.

- Monitor servers and devices using ping
- Graph Details
- Email, Save Option
- Retain Setting
- TraceRoute

Monitor servers and devices

ManageEngine Free Ping Tool helps an administrator to view the following parameters and gives the availability of the server and its response time in real-time

1. Monitor Status of the servers, devices and websites

ManageEngine Free Ping Tool sends ICMP ping request to the server and if the target destination is reachable and if the server sends the ping response back then availability of the host is ensured then tool will show the status of the server as UP. If the tool is unable to reach the target host using ping command then it will state the status as DOWN.

2. Ping Success Count

Tool pings the server, devices at specified time interval if remote host sends back the ping reply, Ping successful reply count will be incremented by one. Number of successful pings counts are shown here.

3. Ping Failure Count

Similar to success count, Tool will send PING request to the servers and devices. If the server or devices did not respond back then the server is not running or may be due to

network related problem the packet is dropped. Then failure count will be incremented by one.

4. Host IPAddress

The ability to ping an IP address of remote host is vital to network troubleshooting. Ping Tool utilizes the ICMP ECHO protocol and sends a packet to a specified destination. It is called an ECHO_REQUEST. If the target destination is reachable, remote host will generate an ECHO_REPLY and sends it back to Ping Tool. When the ECHO_REPLY is received, connectivity between two hosts on a network is verified and the IpAddress is received.

5. RoundTripTime [ms]

Round-trip time (RTT), also called round-trip delay, is the time required for a signal pulse or packet to travel from a specific source to a specific destination and back again. On the internet, an end user can determine the RTT to and from an IP (Internet Protocol) address by sending ping requests to that address. Tool displays the RTT value in table and graph.

6. TimeToLive (Ttl) [Secs]

Time-to-live (TTL) is a value in an Internet Protocol (IP) packet that tells a network router whether or not the packet has been in the network too long and should be discarded. The original idea of TTL was that it should specify a certain time span in seconds that, when exhausted, would cause the packet to be discarded. Tool shows the value of Ttl in table.

Graph Details

The ManageEngine Free ping tool give the round trip time in a intuitive moving real time graph. Graph is drawn with Number of instances in the X-axis versus RoundTripTime (ms) in Y-axis for multiple hosts. The graph is drawn over the specified refresh time Intervals.

Email, Save Option

- Administrator can send email from this tool about the snap shots of the ping , Traceroute details to all stake holders.
- Take snap shot of Ping data details, Ping data graph , trace route details of the servers.

Retain Setting:

Ipaddress / Host name entered is stored internally and while starting the tool next time, Administrator need not enter the all the Ipaddress again. Tool will populate data for all the Ipaddress automatically.

Documents

Introduction

The ManageEngine FREE Ping tool is a simple yet powerful tool with an elegant UI that helps to issue ping requests to "Multiple IP Addresses" in a single instance. And can find the health of the sever continuously for a maximum of 10 hosts. The ping data such as Ipaddress, RoundTripTime, Time To Live (Ttl), Buffer Size and the status are shown in a table.

Add remote hosts to monitor

The user can enter either a HostName or the IPAddress of the remote host in the Addressfield. Multiple IP Addresses / Hostnames can be added by either clicking the Add button or pressing the "Enter" Key in the Address field. The ping tool monitors a maximum of 10 hosts . This will populate the host details in the ping tool table. Later, Ping tool will send ping requests to every host to be monitored after clicking the start button.

Start the tool

After entering all the hostnames or IPAdress in a table then click Start button. When the start button is clicked all the ping data values will be populated in table at a the specified refresh interval.

Stop the tool

The "Stop" button helps the user to stop issuing ping requests to all the populated hosts. Clear

The user can clear the data available in the table as well as in the graph, by clicking 'clear'. To clear the data and the graph, the user has to stop the ping and then click clear icon.

Refresh Interval

By default the refresh interval will be set to 5 minutes. The user can modify the refresh interval according to the need.

Refresh Now

The user can refresh the data available in the table by clicking refresh button this will refresh the table and graph.

Status Icons

- **Grey Icon** : when the user adds a hostname to the table, a grey icon will be displayed which shows the status of the remote host as "Unknown".
- **Green Icon** : When tool receives the ping response then the tool will show the "Green Icon". It shows the status of the remote host as "Success".
- **Red Icon** : Failure to receive ping response then the tool will show the "Red Icon". It shows the status as "Failure".

Table

Collected ping data will be populated in a table.

- **Delete a row** : User can delete a row by clicking the delete icon displayed at the end of the row. To delete the remote host, user has to stop the ping tool then click the delete icon.
- **Sorting the columns** : The user can sort the columns by clicking the "Sort" icon available in the table header.
- **Help** : The user can access help by clicking the help icon available at the top right corner of the Ping Tool.

Email, Save Option

Email Settings Properties :

The Email Settings properties allow you to specify where emails will be sent.

- **MailServer Details**: The MailServer property includes both "Server Name" & "Server Port" .
- **Email** : The "Email" field indicates which email address should receive form data when a user submits form.
- **From** : The "From" property indicates which email address should be filled in for the From address.
- **User Name & PassWord** : The UserName & Password should be given to provide the access to the user to send emails.

Attachments :

- The Attachment allows the users to add files to your message. If attachments is not required, user can skip this section.
- **MaxAttachments** : The maximum attachments allowed in email settings screen is 5 Files.

Save Option :

The save option enables the user to "Save" the Ping Data, Ping Graph and Trace details as bit map in application bin directory. All the data will be saved based on date & time.

- **PingData** : The ping data will be saved as "pingdata_2010-12-6-14-43-49.png".
- **PingGraph** : The ping graph will be saved as "pinggraph_2010-12-7-11-57-5.png".
- **TraceGraph** : The trace page will be saved as "tracedetails_gmail.com_2010-12-7-11-58-1.png" along with the hostname.

System Requirements

Hardware

- Atleast 3 MB of Disk space before installation.
- Less than 10 MB of Disk space after installation.
- Atleast 512 MB RAM.

Software

- Microsoft Windows Operating Systems eg. Windows XP, Windows Vista, Windows 2003 & Windows 7.
- Microsoft .Net Framework 2.0 / 3.0 / 3.5.

Note: If you do not have Microsoft .NET Framework, please download the required version from

1. <http://www.microsoft.com/downloads/details.aspx?FamilyID=0856EACB-4362-4B0D-8EDD-AAB15C5E04F5&displaylang=en> (Microsoft .Net Framework 2.0
2. <http://www.microsoft.com/downloads/details.aspx?FamilyID=10CC340B-F857-4A14-83F5-25634C3BF043&displaylang=en> (Microsoft .Net Framework 3.0)

FAQ

1. I have downloaded the tool but it is not running. what should i do?

Please check Dot Net Platform is installed in your system. Run the utility available in the bin directory, Check_Dot_Net_version.exe , It will tell you the Dot Net version. If Dot Net platform is not available in the system, download the platform. Please see the software requirements page for downloading the platform.

2. Is it possible to monitor multiple servers simultaneously?

Yes, you can monitor 10 servers simultaneously.

3. Is it possible to view the ping results in the graphical format?

Yes, the ping data are shown in the graphical format in the "Graph" tab.

4. Can the refresh interval for monitoring tool be modified ?

Yes, The refresh interval can be modified.

5. Can i use your tool to monitor external servers/websites?

Yes, The Free Ping Tool can monitor external websites also. If the servers /websites are reachable then It can be monitored.

6. Can I monitor more than 2 servers simultaneously?

Yes, the Free Ping tool can monitor more than two servers at a time. It can monitor maximum of 10 servers simultaneously.