

ManageEngine

IT Management, Simplified

Real-time IT management solution for the new speed of business

ManageEngine

Enterprise IT management software division of Zoho Corporation

Founded in 1996 as AdventNet

Privately held, Rock solid Supplier and Partner

Headquartered in Pleasanton, California

Millions of customers across industries

ManageEngine - the Enterprise IT Management division of **ZOHO** Corporation



(Est. 1996)

Privately held, profitable
since inception

(Est. 2005)



Work.Online

Applications for Business,
Collaboration, and
Productivity

(Est. 2002)

ManageEngine

Enterprise IT Management Solutions

(Est. 1996)



Enterprise Internet of Things and
Unified Network Management Solutions

ManageEngine **Solutions**



Active Directory Management

- Active Directory
- Exchange Server
- Self-service Portal
- Recovery and Backup



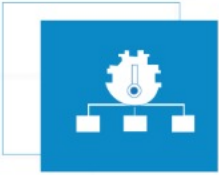
Endpoint Management

- Desktop Management
- Mobile Device Management
- OS Deployment
- Patch Management
- Browser Management
- Vulnerability Management



IT Service Management

- Help Desk
- Asset Lifecycle
- CMDB and ITIL
- Customer Support



IT Operations Management

- Network Performance
- Application Performance
- End user Experience
- Network Change and Configuration
- Converged Infrastructure
- Storage Infrastructure
- Bandwidth and Traffic
- SQL Server Monitoring



On Demand

- Application Performance
- Helpdesk Software
- Active Directory Recovery and Backup
- Mobile Device Management
- Patch Management
- Log Management



IT Security

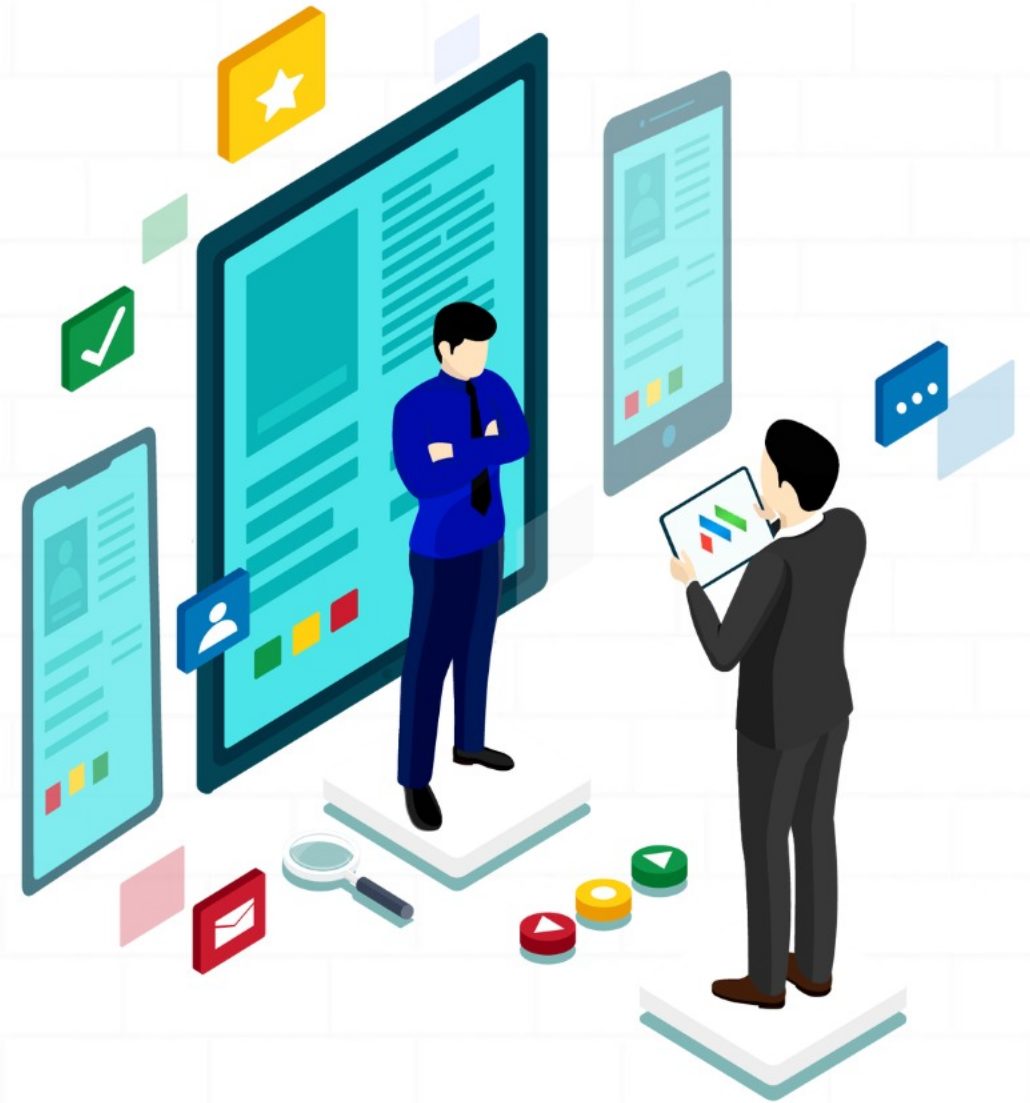
- Log Management
- Firewall Analysis
- Vulnerability Analysis
- Privileged Password
- Network Anomaly Detection

2 Million Users

3 of every 5 Fortune 500 companies are ManageEngine customers



ManageEngine 
Mobile Device Manager Plus
Product Overview



Supported OS



iOS

versions 4.0 and above
iPhone, iPad, iPod Touch



macOS

versions 10.7 and above
Laptops



Android

versions 4.0 and above
Smartphones and tablets



Windows

versions 8 and above
Smartphones, tablets
& laptops (ver.10)




Chrome OS

Deployment Options



ManageEngine
Desktop Central



Available as
On-premises 


ManageEngine
Mobile Device Manager Plus



Available as
On-premises  & **Cloud** 

ManageEngine
Mobile Device Manager Plus MSP



Available as
On-premises 

Also hosted on:



Feature Highlights



Device Onboarding

❖ Automated Device Enrollment

- Apple:
 - Apple Business Manager (ABM)
 - Apple Configurator
- Android Admin Enrollment
 - Zero-touch Enrollment
 - Samsung Knox Mobile Enrollment
 - EMM Token Enrollment
 - NFC Enrollment
- Windows ICD and Azure (AutoPilot) Enrollment
- Chrome OS Enrollment

❖ Enrollment by invite

- Manual enrollment through QR code scanning
- Bulk Enrollment via CSV
- SMS Enrollment

❖ End user Enrollment

- Self Enrollment



Asset Management

- ❖ Troubleshoot devices by remotely taking control of them from your desk without requiring additional apps/services
- ❖ Instantly know the location of corporate devices
- ❖ View the history of all locations traversed by the devices
- ❖ View the location of all your devices at the same time on a single map
- ❖ Automatically get complete details of the device such as network information, certificates etc.
- ❖ Schedule scans to automate periodic update of device information



Profile Management

❖ Security Hardening of devices

- Enforce a strong passcode on devices to adhere to enterprise's security standards
- Relieve users from password fatigue using Enterprise Single Sign-on
- Prevent unauthorized data access by ensuring organizations can use only trusted Wi-Fi networks
- Have your essential contacts and important calendar events synced to employee's devices
- Disable basic device features/settings such as Bluetooth, camera, calls, SMS, external storage, factory reset etc.



Profile Management

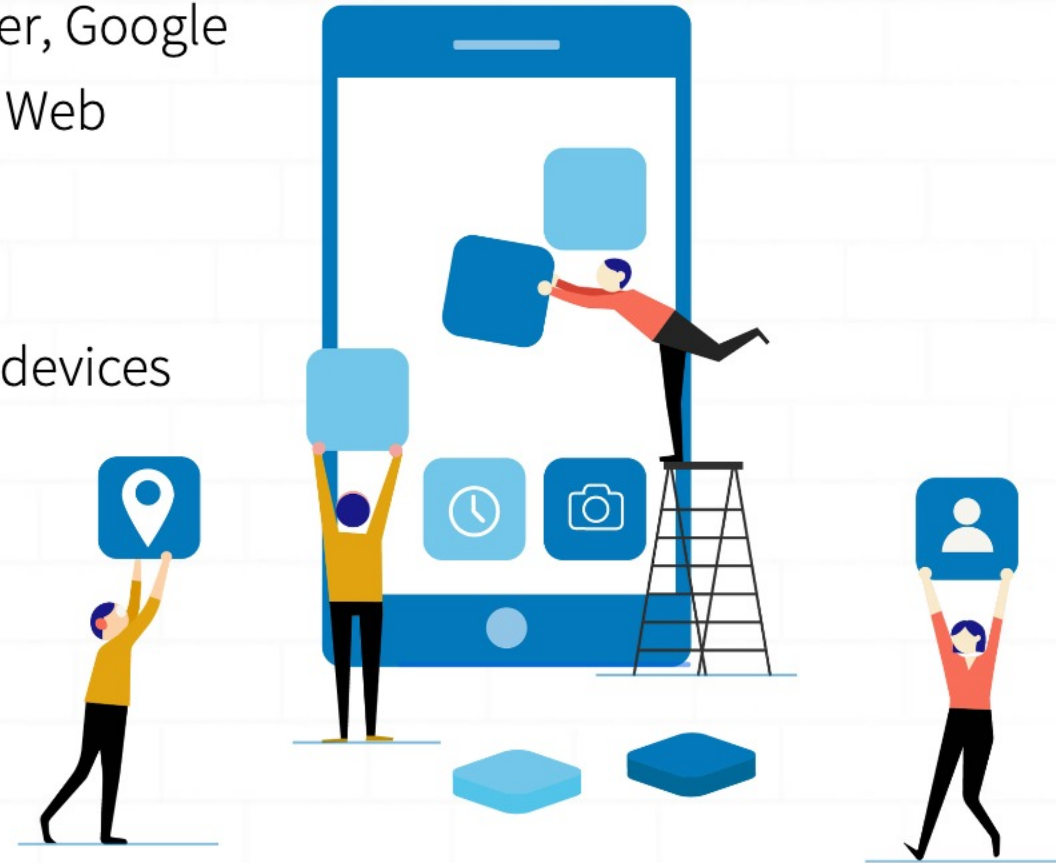
❖ Security Hardening of devices

- Ensure secure access of corporate data from anywhere and anytime using VPN and per-app VPN
- Prevent access to malicious and unapproved websites through URL filtering
- Facilitate certificate-based authentication by pushing user-specific security certificates using SCEP
- Secure network communications by ensuring it is routed through the enterprise proxy



App Management

- ❖ Create and maintain enterprise app catalog containing only enterprise-approved apps
 - Bulk purchase of Store apps (Apple Business Manager, Google Play for Work, Windows Business Store and Chrome Web Store)
 - Custom business apps / Enterprise apps
 - Manage app licenses and revoke/reuse apps across devices
- ❖ Install/Uninstall apps without any user intervention
- ❖ Blacklist non-productive apps and prevent its usage/installation on devices



App Management

- ❖ Lock down devices to a specific app or a set of approved apps, while pre-configuring settings and preventing users from modifying them
- ❖ Restrict users from uninstalling corporate apps, ensuring there is no drop in productivity
- ❖ Restrict users from updating specific apps while ensuring critical app updates are deployed immediately without any user intervention and minimal admin action
- ❖ Pre-define app configurations and permissions, ensuring the apps are ready to use on installation
- ❖ Deploy enterprise apps to your production environment after testing them on a test bed



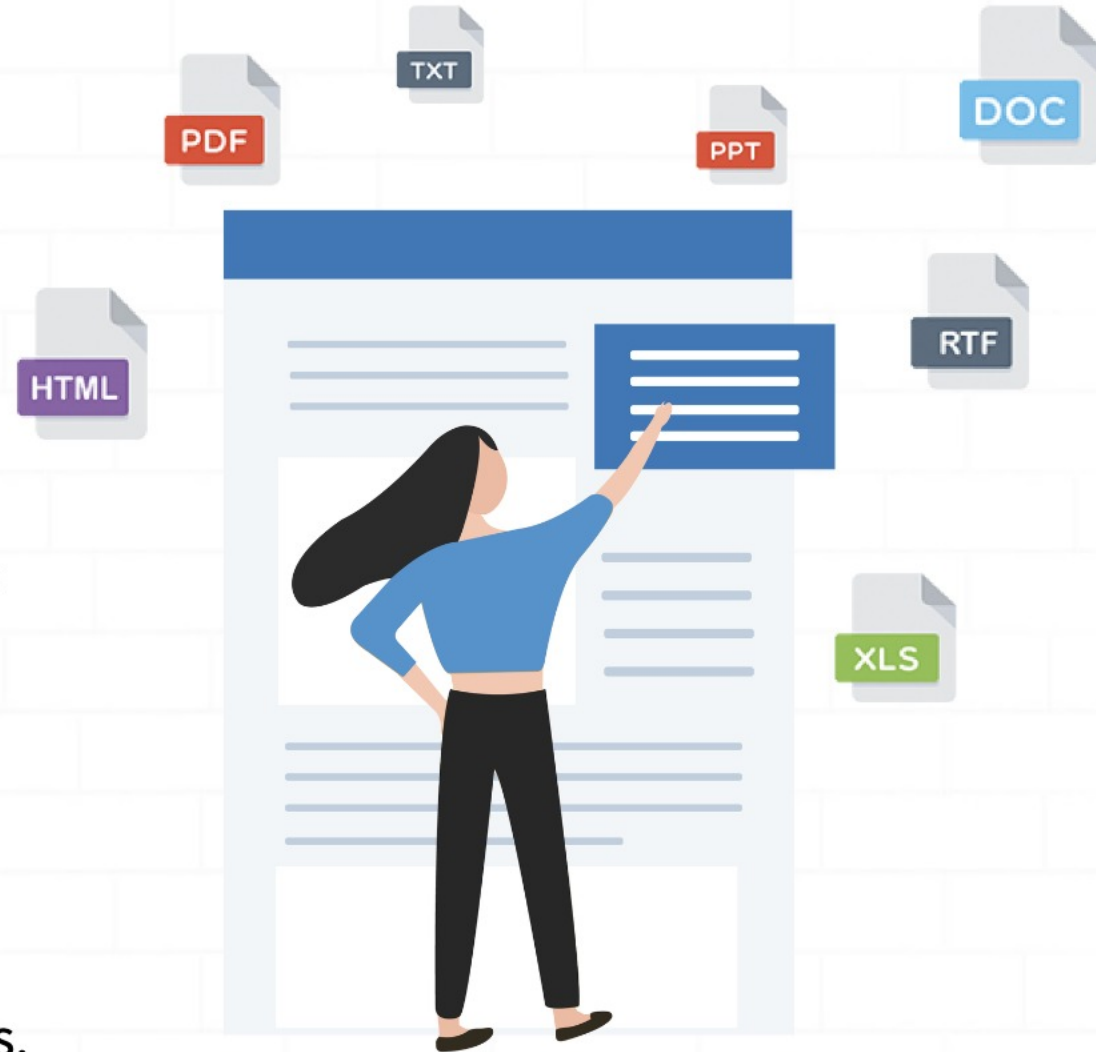
E-mail Management

- ❖ Pre-configure your work email on devices with the requisite settings using Exchange ActiveSync
- ❖ Prevent the transfer of emails from corporate accounts to user's personal accounts
- ❖ Securely download and view confidential corporate attachments on the ManageEngine MDM app
- ❖ Prevent users from accessing corporate Exchange accounts from unauthorized devices



Content Management

- ❖ Create a repository containing critical business documents and media files
- ❖ Securely share files in multiple formats to devices without depending on any third-party services
- ❖ Sandbox your corporate documents to securely view distributed content from the ManageEngine MDM app
- ❖ Prevent the back-up of corporate data on third-party cloud services and restrict sharing it to other devices
- ❖ Automate content update on mobile devices
- ❖ Centralized removal of content from managed devices.



Security Management

- ❖ Enforce and automate OS updates to prevent ad-hoc updates and bandwidth choking
- ❖ Apply security restrictions on devices when they leave a designated area with geofencing
- ❖ Lock down lost or stolen devices using Lost Mode
- ❖ Secure data on devices and external storage with enforced encryption
- ❖ Overcome the hassels of Factory Reset Protection with EFRP
- ❖ Encrypt every bit of your data on Mac machines with FileVault



Security Management

- ❖ Remotely lock devices to prevent unauthorized access
- ❖ Wipe the corporate data or the complete device when lost or stolen
- ❖ Clear or reset device passcode with a single click
- ❖ Locate misplaced devices by remotely ringing an alarm
- ❖ Detect and remove jailbroken/rooted device from your organization's network
- ❖ Set firmware passwords on Mac



Bring Your Own Device (BYOD)

- ❖ Containerization of corporate data
- ❖ User's personal data will be untouched
- ❖ Separate profile strategy to secure corporate data on employee owned devices
- ❖ Restrict corporate data sharing between
 - ❖ corporate and personal apps
 - ❖ managed and unmanaged devices
 - ❖ device and third party cloud services
- ❖ Effective management of multiple device types



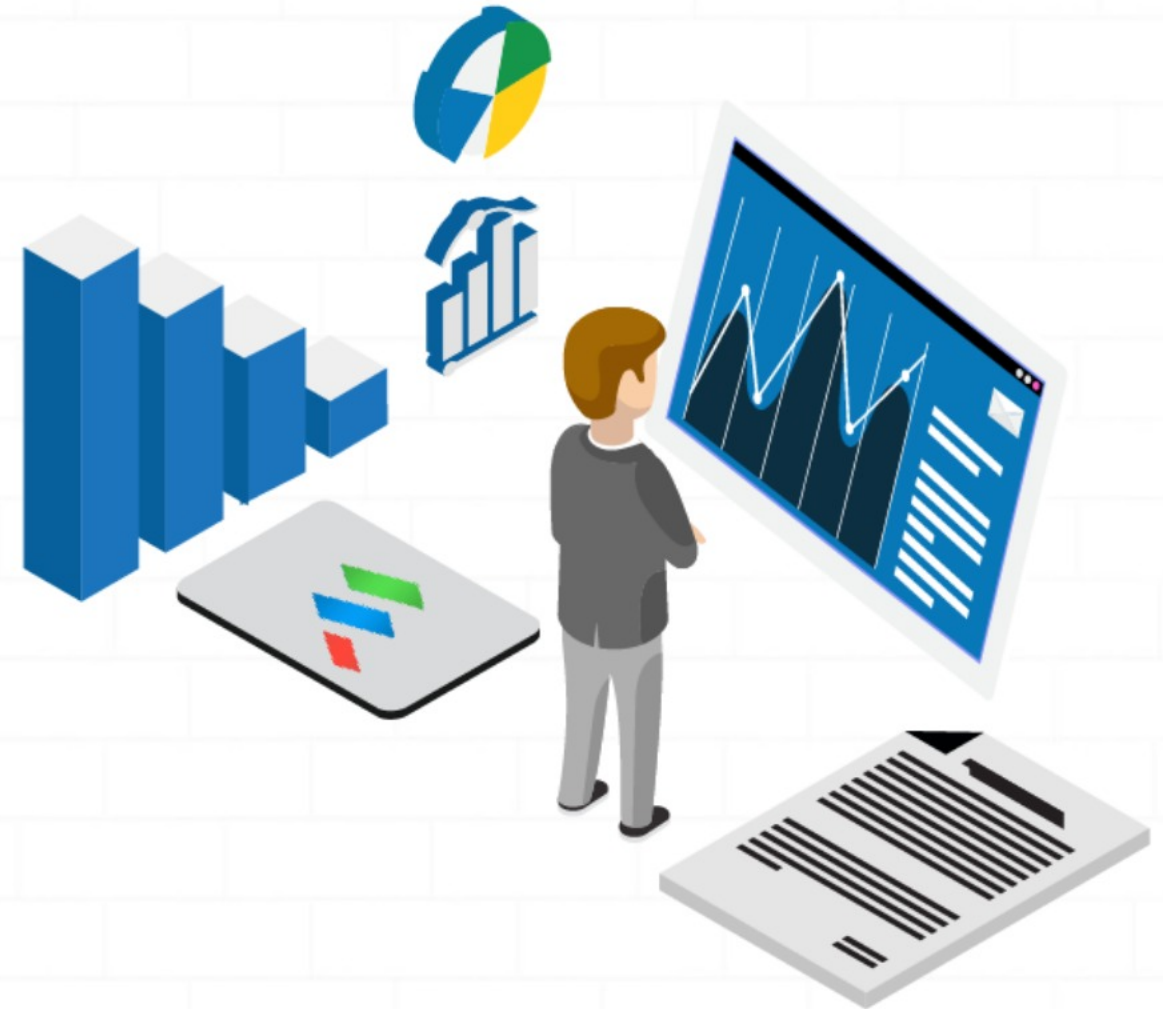
Laptop Management

- ❖ Enroll Windows 10 laptops and Macs over-the-air
- ❖ Distribute Store and in-house apps to Windows laptops
- ❖ Lock down Windows laptops to specific app(s)
- ❖ Remotely locate Windows laptops and Macs
- ❖ Secure data on Macs with FileVault encryption and Firmware passwords
- ❖ Remotely restart and wipe Windows laptops



Reports

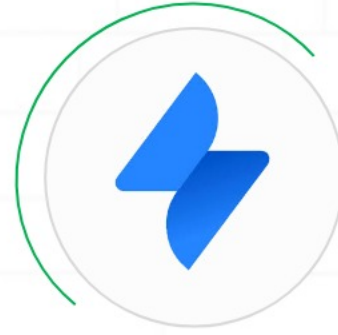
- ❖ 13 pre-defined reports
 - Apps by devices
 - Devices with/without specific app
 - Devices by model
 - Devices by passcode types
 - Device by enrollment time
 - Inactive devices
- ❖ Schedule reports
- ❖ Custom query reports



Integrations



SPICEWORKS



JIRA SERVICE DESK



CRM



SERVICENOW



ManageEngine
Mobile Device Manager Plus



ZENDESK



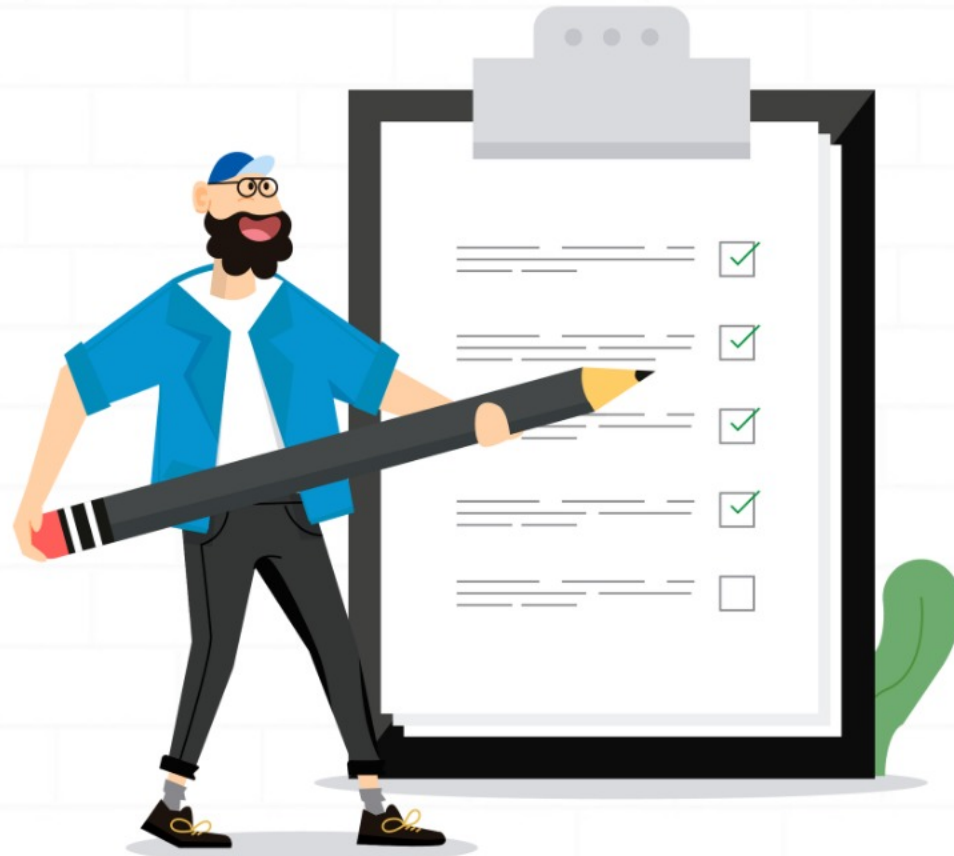
SERVICEDESK PLUS



ZOHO CREATOR

Summary

A standalone mobile device management solution available on-premises, on Cloud and as an MSP version for managed service providers.



Awards & Recognitions



Awards & Recognitions



Know more

Visit: <https://www.manageengine.com/mobile-device-management/>

Try it for free!

Visit: <https://mdm.manageengine.com/free-trial.html>