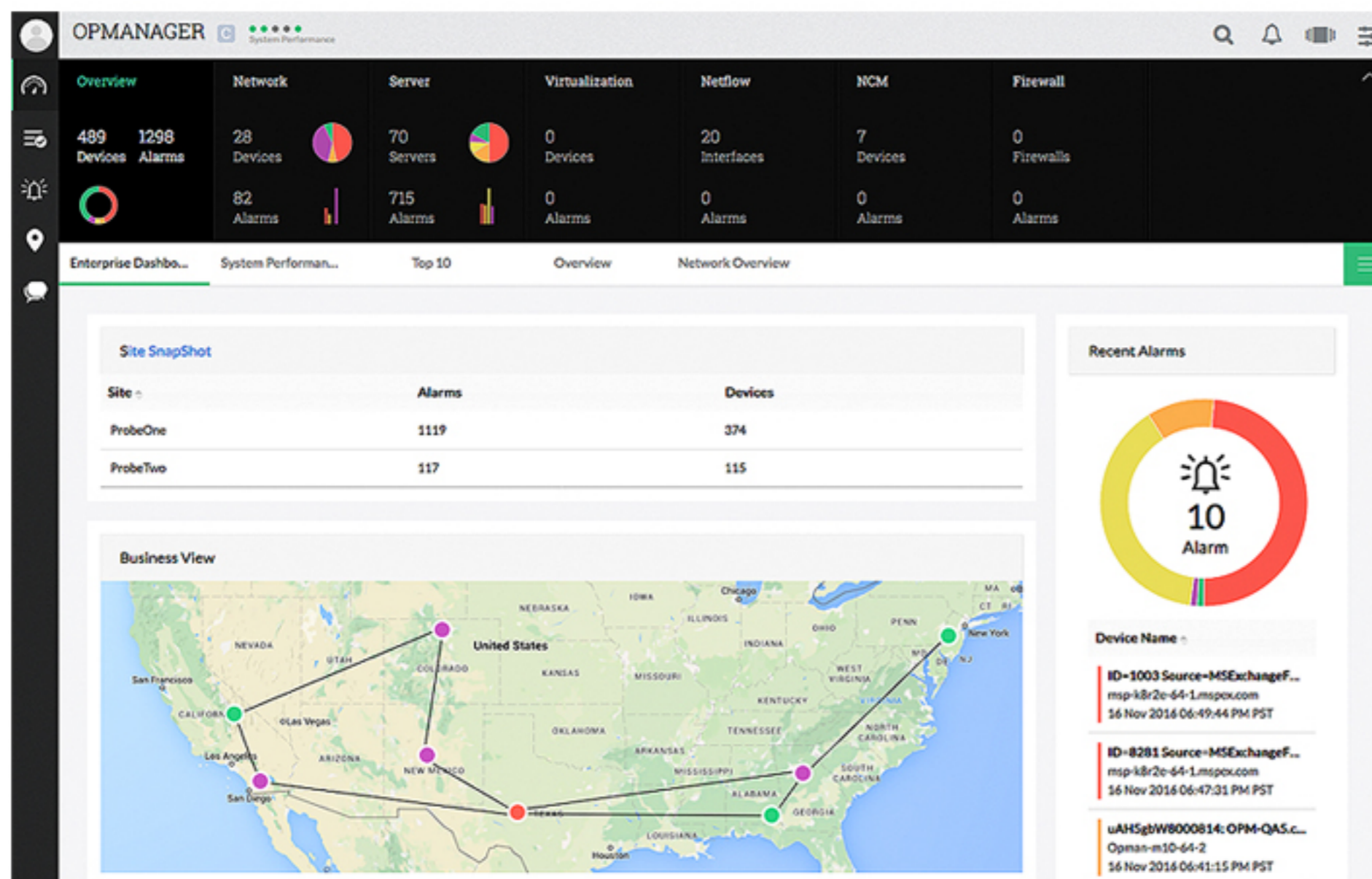




**OpManager Enterprise Edition** is integrated network management software that includes a probe-central architecture to manage distributed enterprise networks. It proactively monitors the network for performance, bandwidth, configuration changes, compliance, and security. It is 100% web based and supports a wide range of vendors and technologies. It's easy-to-use and works out-of-the-box.



# 5 in 1

## Network Management Software

- Network Performance Monitoring
- Network Traffic Management
- Configuration Management
- Firewall Log Management
- IP Address & Switch Port Management

TRUSTED BY 1 MILLION  
IT ADMINS

DISTRIBUTED  
NETWORK MONITORING

STARTS AT \$16495 FOR  
500 DEVICES

30-DAY FREE TRIAL  
AVAILABLE

## Features

### Network Performance Monitoring

Monitor network devices such as routers, switches, firewalls, load balancers, etc. for health and performance via SNMP and CLI protocols.

### Physical & Virtual Server Monitoring

Monitor Windows, Linux, Unix, VMware, Hyper-V, & Xen servers for CPU, Memory, & Disk Utilization. Also monitors Windows services, TCP services, processes, events, and more.

### Network Traffic Management

Monitor and analyze bandwidth using NetFlow, sFlow, jFlow, IP FIX and more. Find out top conversations, source-destinations, & top applications and shape traffic by applying ACL.

### Network Configuration Management

Backup & monitor startup and running configurations of network devices via Telnet and SSH protocols. Get alerts for unauthorized configuration changes.



# Features

## Firewall Log Management

Collect, archive, and analyze firewall logs for security and compliance. Monitor and edit firewall policies to track user behavior and enhance network security.

## Fault Management

Proactively monitor performance of network with multi-level thresholds and get instant notifications via email and SMS. Automate troubleshooting with workflows.

## Reports

View and analyze performance of devices with 100+ built-in reports. Create your own set of reports with custom Report Builder. Schedule and email reports.

# Key differentiators

- True distributed network monitoring
- Unified dashboard & snapshot pages
- Faster troubleshooting
- Reduced maintenance footprint

# Minimum system requirements

for managing up to 1M interfaces or 50K devices

## Central

**CPU** : Intel Xeon Quad Core, 3.5GHz  
**RAM Size** : 8 GB  
**Hard Disk** : 60 GB

## Probe:

<b>CPU</b> : Intel Xeon Quad Core, 3.5GHz	<b>OS Windows</b> : 2012R2 / 2012 / 2008R2 / 2008 / 2003Server / Vista / v7 / 2000 Professional SP4
<b>RAM Size</b> : 8 GB	<b>OS Linux:</b> : Ubuntu, Debian, Suse, Red Hat, Suse, Fedora, and Mandrake
<b>Hard Disk</b> : 60 GB	<b>Database:</b> : MSSQL 2000, 2005, 2008 and 2012 or OpManager bundled PostgreSQL

## IP Address & Switch Port Management

Manage IPv4 and IPv6 addresses for space, availability and history. Monitor and manage switch ports for status, availability and history.

## Dashboards & Maps

Create custom dashboards with 100+ available widgets and group them to view on NOC screens with CCTV views. Also create business views with custom background and live link between the devices.

# Architecture

