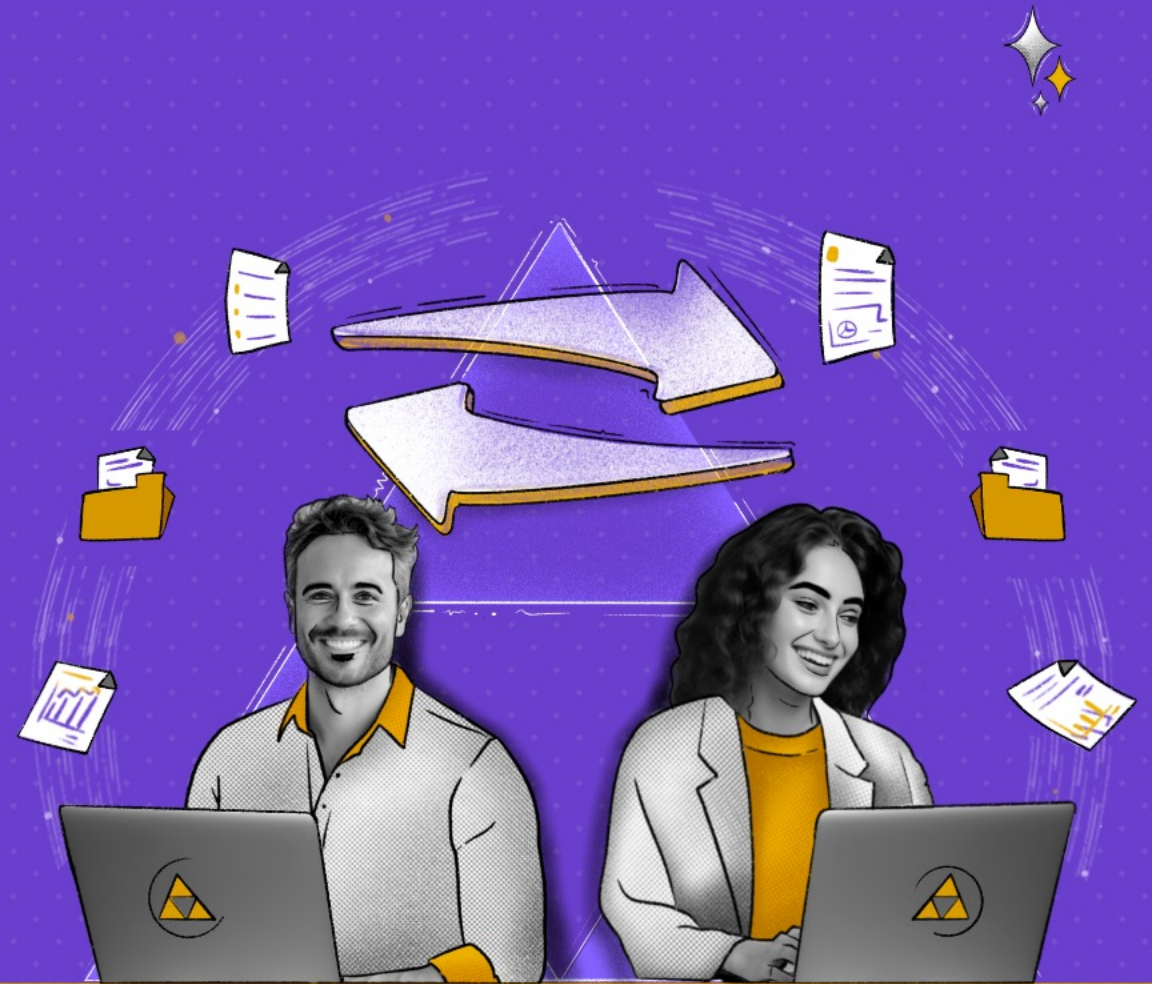


Simplify your Active Directory migrations





Outline

1

Empowering enterprises:
ADManager Plus
in action

2

Why
Migration
matters

3

A closer look at the
ADManager Plus
migration tool

4

Why use
ADManager Plus for
migration?

5

Use case

6

Additional
capabilities

Empowering enterprises ADManager Plus in action



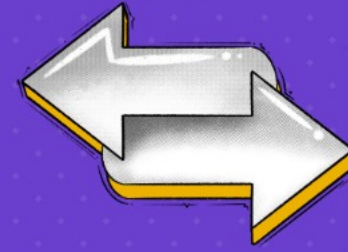
ADManager Plus is an **identity governance and administration (IGA) tool** designed for securely managing and governing identities in Active Directory (AD), Microsoft 365, and other enterprise applications.



ADManager Plus also functions as an **AD migration tool**, assisting in the secure migration of AD objects.

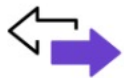


Why migration matters



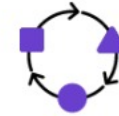
Seamless operational continuity

Effective AD migrations are crucial for organizations during changes like mergers or acquisitions, ensuring a seamless transfer of data and infrastructure for operational continuity.



Streamlined migration strategy

A well-executed migration strategy, supported by tools like the Active Directory Migration Tool (ADMT) and ADManager Plus, streamlines the process, reduces risks, and helps achieve strategic objectives efficiently.



Adaptability and efficiency

They enable businesses to adapt to evolving technology, improve efficiency, and stay competitive.

A closer look at the **ADManager Plus** migration tool

As an AD migration tool,
ADManager Plus lets you
perform



User migration

Migrate users, including their access rights, group memberships, and SID history.



Group migration

Migrate groups, including their members.



Contact migration

Migrate AD contacts, along with their OU details.



GPO migration

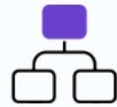
Migrate GPOs with or without ACL, or a migration table.

Why use ADManager Plus for migration?



Conflict resolution

Automatically resolve naming conflicts using predefined formats.



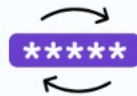
OU hierarchy migration

Migrate objects with their OU details across domains and forests.



Permission management

Transfer users and groups along with their access rights.



Password migration

Securely migrate user passwords with preconfigured settings.

Why use ADManager Plus for migration?



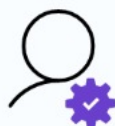
Data integrity assurance

Preserve object attributes to prevent data loss during migration.



Efficiency enhancement

Migrate large object volumes without AD performance degradation.



Administrative relief

Delegate tasks to technicians, reducing the burden on administrators.



Data loss prevention

Backup and recover data instantly in case of migration failures, minimizing data loss.



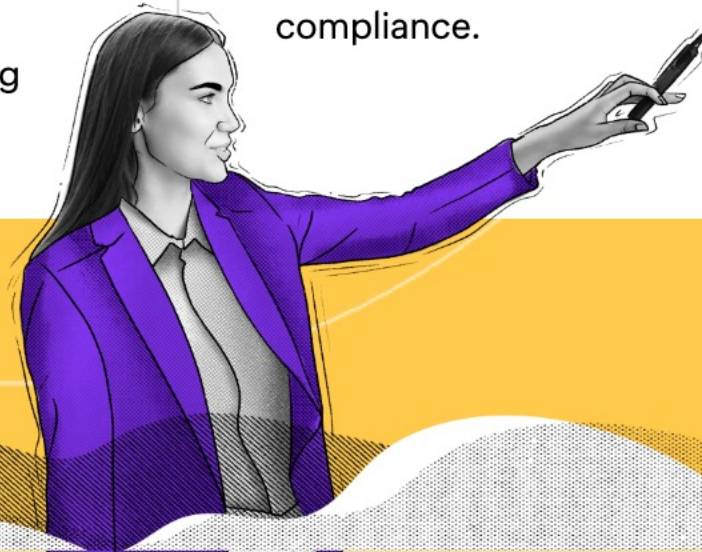
Use case

Scenario

ABC Corp recently acquired XYZ Corp, and as part of the integration process, they need to migrate users and groups from the XYZ Corp's AD forest to their own AD forest. ABC Corp wants to ensure a seamless migration process without disrupting user access and maintaining security permissions.

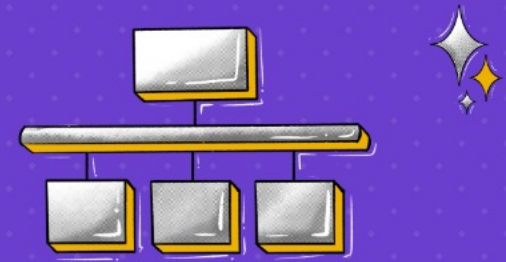
Solution

By leveraging ADManager Plus, ABC Corp can efficiently migrate users and groups from XYZ Corp's AD forest to their own, ensuring a seamless integration process while maintaining security and compliance.



Use case

Simplify AD forest migration with thorough pre-planning, accurate execution, and detailed post-migration tasks.



1

Pre-migration planning

Analyze existing AD infrastructures of both forests.

Map users and groups from source to destination AD forest.

Migration execution

Schedule migration during off-peak hours.

Ensure accurate migration of user accounts, group memberships, and permissions.

2

3

Post-migration tasks

Update DNS records to point to new AD forest.

Verify migration success using reporting capabilities.

360° identity governance across AD, Microsoft 365, and Google Workspace.



Enjoy frictionless integrations with enterprise applications.

Conduct periodic access certification campaigns.



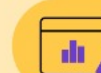
Backup and recover AD, Azure AD, and Google Workspace.

Implement approval-based business workflows.



Additional capabilities

Explore the comprehensive features of ADManager Plus, including:



Monitor AD and Microsoft 365 health and mitigate risks.


Utilize template-based, event-driven automations.



Over 200 actionable reports.



Explore further details about [ADManager Plus!](#)

For a comprehensive product walk-through, simply 

[Register here](#)

ManageEngine 
ADManager Plus

Thank you!